

10035

4709

WYDAWNICTWA  
TOWARZYSTWA NAUKOWEGO WARSZAWSKIEGO.  
III. — WYDZIAŁ NAUK MATEMATYCZNYCH I PRZYRODNICZYCH.

PUBLICATIONS DE LA SOCIÉTÉ DES SCIENCES DE VARSOVIE.  
III. — CLASSE DES SCIENCES MATHÉMATIQUES ET NATURELLES.

H. DZIEDZICKI. k

# ATLAS

ORGANÓW ROZRÓDCZYCH (HYPOPYGIUM)  
TYPÓW WINNERTZ'A I GATUNKÓW ZNAJDUJĄCYCH  
SIĘ W JEGO ZBIORZE MYCETOPHILIDÓW.

# ATLAS

DES ORGANES GÉNITAUX (HYPOPYGIUM) DES TYPES DE WINNERTZ  
ET DES GENRES DE SA COLLECTION DE MYCÉTOPHILES.

Z ZAPOMOZI KASY POMOCY DLA OSÓB PRACUJĄCYCH NA POLU NAUKOWEM  
IMIENIA Dr. MED. JÓZEFA MIANOWSKIEGO.



WARSZAWA.

NAKŁADEM TOWARZYSTWA NAUKOWEGO WARSZAWSKIEGO.  
SKŁAD GŁÓWNY W KSIĘGARNI E. WENDE I S-ka (T. HIŻ I A. TURKUŁŁ).

1915.

EX LIBRIS  
F. W. EDWARDS

W 1832 roku coleopterolog Burmeister w swoim „Handbuch der Entomologie“ I str. 227, tak się wyraża o organach rozrodczych: „Nie znam innego organu, któryby był tak rozmaitej formy i podlegał tak charakterystycznemu rodzajowemu ukształtowaniu“. W 1857 roku Thomson w *Opuscula Entomologica VII*, Lund, pisze: U niektórych Carabidów penis (hypopygium) jest doskonałą rozpoznawczą cechą gatunkową“.

W 1857 roku profesor C. Lindeman w Moskwie, w ogłoszonych w „Bulletin de la Soc. Impér. des Naturalistes de Moscou“ porównawczo anatomicznych badaniach organów rozrodczych mężczyzn u *Bostrichidea*, badał ten organ pod mikroskopem i nazwał go „Begattungsglied“. W tymże samym roku wyszły rezultaty podróży Aleksieja Fedczenki po Turkiestanie. Zbierał on głównie pszczołowate, których nadzwyczaj bogatą kolekcję przywiózł. Specjalnie zajmował się Apidami. Badał on nie tylko części zewnętrzne, ale także i organy rozrodcze, w tym celu zrobił dużo preparatów mikroskopowych organów rozrodczych i na tej zasadzie chciał wykazać stosunek rozmaitych form i spróbować utworzyć genetyczną morfologię.

Śmierć nie pozwoliła mu doprowadzić tych zamiarów do urzeczywistnienia. Zostawił b. piękną tablicę organów rozrodczych rodzaju *Anthophora*. W r. 1876 na zebraniu naturalistów w Gratzu Dr. G. Kraatz, w obecności prof. v. Kras'a, Trosche'a, v. Kisenweter'a i innych, oświadczył, że co do znaczenia organów płciowych w systematyce, on jest tego samego zdania co Thomson, t. j., że budowa organu płciowego u owadów jest kluczem do odnalezienia gatunku.

W r. 1881 Dr. G. Kraatz opracował na tych zasadach budowy hypopygium: Cetonidae i Melolonthidae, podając tablice z rysunkami.

We wszystkich wyżej wspomnianych pracach niema wzmianki ani o extyrpacji ani też o robieniu preparatów.

Mając powyższe zdania uczonych na uwadze, przyszedłem przy studyowaniu owadów dwuskrzydłych, a szczególnie Mycetophilidów, do tego samego przekonania, że bez znajomości budowy organów rozrodczych obyc się nie można.

Chcąc więc mieć pewną podstawę w dyagnozowaniu, postanowiłem starać się, aby mi pozwolono przestudyować zbiór Winnertza, znajdujący się w Bonn i zarazem uzyskać pozwolenie extyrpacji dla zbierania odpowiednich preparatów mikroskopowych.

Z tą propozycją zwróciłem się do prof. Hertwig'a, pod którego opieką zbiór Winnertza pozostawał. Moje starania zostały pomyślnie zakończone, profesor zgodził

się na moją propozycję, zastrzegając sobie całość zbioru i odesłanie go wraz z preparatami do Bonn.

Przysłano mi więc częściowo gatunki następujących rodzajów: *Macrocera* Ponz. *Platyura* Meig. *Sciophila* Hfegg., *Lasiosoma* Winn., *Boletina* Staeger., *Rymosia* Winn., *Allodia* Winn., *Brachycampta* Winn., *Phronia* Winn., *Exechia* Winn., *Mycetophila* Meig.

Po ogłoszeniu mojej drugiej pracy „Przyczynek do Fauny owadów dwuskrzydłych: *Hertwigia*, *Eurycera*, *Boletina*, *Sciophila*“ Pamiętnik Fizyograficzny, tom V, rok 1885, Warszawa, — dalsza przesyłka została mi wstrzymana.

Badania więc moje musiały się ograniczyć tylko do tej części zbioru Winnertza, która była dla mnie dostępna i ten cenny materiał, jaki udało mi się zdobyć, oddaję na użytek pracownikom na polu Dipterologii.

Warszawa, 22 Stycznia 1915 r.



En 1832, le coléoptérologue Burmeister dans son „Handbuch der Entomologie“ (tome I, page 227) s'exprimait ainsi sur les organes génitaux: „je ne connais pas d'organe qui soit aussi varié dans sa forme et qui soit soumis à une conformation générique si caractéristique“.

Thomson, dans ses „Opuscula entomologica“ VII, publiés en 1857, dit que „chez certains Carabidés le pénis (Hypopygium) possède un caractère spécifique bien facile à établir“.

En 1857, le professeur C. Lindeman de Moscou publiait dans les „Bulletins de la Société Impériale des Naturalistes de Moscou“ les résultats de ses travaux sur l'anatomie comparée des organes génitaux mâles des *Bostrichidés*. Il étudiait cet organe au microscope et lui donnait le nom de „Begattungsglied“.

On publia, la même année, les comptes rendus du voyage d'Alexis Fedchenko au Turkestan. Il y étudia spécialement les Apidés dont il recueillit une riche collection. Il étudiait, en outre des formes externes des Apidés, leurs organes génitaux, dont il a fait un grand nombre de préparations microscopiques; il voulait établir sur cette base les relations existant entre les différentes formes et essayer de fonder une morphologie génétique. La mort interrompit la réalisation de ses projets. Il a laissé de belles tables représentant les organes génitaux d'*Anthophores*.

En 1876, au Congrès des Naturalistes de Gratz, le Docteur G. Kraatz déclara en présence des professeurs von Kras, Tröschel, von Kisenweter et autres, qu'il était du même avis que Thomson, à savoir que la conformation des organes génitaux chez les Insectes doit servir de base pour la désignation de leurs caractères spécifiques.

Le Docteur G. Kraatz, se basant sur ce principe, publia en 1881 ses études sur la conformation de l'hypopygium des Cétonidae, des Melolonthidae, suivies de tables appropriées. Dans tous les travaux mentionnés ci-dessus, il n'est point question d'extirpation ni de préparations microscopiques.

Je tenais toujours compte de l'avis de tous ces savants en procédant à l'étude des Diptères, des Mycétophiles surtout, et j'acquis par la suite la conviction qu'il est impossible de se passer de l'examen des organes génitaux.

Je me décidai, afin d'établir une base sûre de diagnostic, d'étudier la collection de Winnertz de Bonn et d'obtenir l'autorisation d'extirper les organes génitaux pour

en faire les préparations microscopiques. J'adressai ma proposition au professeur Hertwig, auquel on a confié la conservation de la collection de Winnertz. Ma proposition fut favorablement accueillie; le professeur Hertwig accorda son autorisation tout en se réservant la garantie intégrale de la collection et son renvoi régulier à Bonn avec les préparations microscopiques.

A la suite de cette entente on me faisait parvenir à tour de rôle les représentants des genres suivants:

*Macrocera* Ponz., *Platyura* Meig., *Sciophila* Hfgg., *Lasiosoma* Winn., *Boletina* Staeger., *Rymosia* Winn., *Allodia* Winn., *Brachycampta* Winn., *Phronia* Winn., *Exechia* Winn., *Mycetophila* Meig.

Après la publication de mon second travail: „Contribution à la faune diptérologique: *Eurycera*, *Boletina*... (Mémoires physiographiques, vol. V, Varsovie 1885“), l'envoi des séries qui me manquaient fut interrompu.

Mes études furent donc forcément bornées à la seule partie de la collection de Winnertz qui m'avait été octroyée, et je me permets aujourd'hui de présenter ces précieux matériaux aux Diptérologues.



# Objasnenie tablic.

## Explication des planches.



### Tablica I. (Table I).

- Fig. 1. *Macrocera lutea* Mg n. hypopygium ex alto.  
" 2. " " " " ab imo.  
" 3. *Macrocera phalerata* Hgg. hypopygium ex alto.  
" 4. " " " " ab imo.  
" 5. *Macrocera maculata* Hgg. hypopygium ex alto.  
" 6. " " " " ab imo.  
" 7. *Macrocera pusilla* Mg n. hypopygium ex alto.  
" 8. " " " " ab imo.  
" 9. *Macrocera fasciata* Mg n. hypopygium ex alto.  
" 10. " " " " ab imo.  
" 11. *Macrocera centralis* Mg n. hypopygium ex alto.  
" 12. " " " " ab imo.

### Tablica II. (Table II).

- Fig. 13. *Macrocera angulata* Mg n. hypopygium ex alto  
" 14. " " " " ab imo.  
" 15. *Platyura marginata* Mg n. hypopygium ex alto.  
" 16. " " " " ab imo.  
" 17. *Platyura ochracea* Mg n. hypopygium ex alto.  
" 18. " " " " ab imo.  
" 19. *Platyura semirufa* Mg n. hypopygium ex alto.  
" 20. " " " " ab imo.  
" 21. " " " appendix interna v. adminiculum Westh.  
" 22. " " " ovipositor ♀  
" 23. *Platyura modesta* Win n. hypopygium ex alto.  
" 24. " " " " ab imo.

- Fig. 25. *Platyura fasciata* Mgn, hypopygium ex alto.  
 " 26. " " " " ab imo.  
 " 27. " " " " ovipositor.  
 " 28. *Platyura infuscata* Winn, " ex alto.  
 " 29. " " " " ab imo.  
 " 30. " " " " ovipositor.  
 " 31. *Platyura unicolor* Staeg. }  
       " *pallida* Staeg. } hypopygium ex alto  
       " *discoloria* Winn. }

Tablica III. (Table III).

- Fig. 32. *Platyura unicolor* Staeg. }  
       " *pallida* Staeg. } hypopygium ab imo.  
       " *discoloria* Winn. }
- " 33. " " " ovipositor,  
 " 34. *Platyura aestivalis* Winn. ovipositor.  
 " 35. *Platyura bicolor* Macq. hypopygium ex alto.  
 " 36. " " " " ab imo.  
 " 37. " " " " ovipositor.  
 " 38. *Platyura succincta* Mgn. hypopygium ex alto.  
 " 39. " " " " ab imo.  
 " 40. " " " " ovipositor.  
 " 41. *Platyura nemoralis* Mgn. }  
       " *nana* Macq. } hypopygium ex alto.  
 " 42. " " " " ab imo.  
 " 43. *Sciophila flavicollis* Zett. hypopygium ex alto.  
 " 44. " " " " ab imo.  
 " 45. *Sciophila cinerascens* Zett. }  
       " *alacris* Winn. } hypopygium ex alto.  
       " *inanis* " }
- " 46. " " " " ab imo.  
 " 47. *Sciophila fasciata* Fries. hypopygium ex alto.

Tablica IV. (Table IV).

- Fig. 48. *Sciophila fasciata* Fries. hypopygium ab imo.  
 " 49. *Sciophila punctata* Mgn. }  
       " *limbata* Winn. } hypopygium ex alto.  
 " 50. " " " " ab imo.  
 " 51. *Sciophila hyalinata* Mgn. hypopygium ex alto.  
 " 52. " " " " ab imo.  
 " 53. *Sciophila occultans* Winn. hypopygium ex alto.  
 " 54. " " " " ab imo.

- Fig. 55. *Sciophila incisurata* Zett. hypopygium ex alto.  
" 56. " " " " ab imo.  
" 57. *Sciophila exigua* Winn. hypopygium ex alto.  
" 58. " " " " ab imo.  
" 59. *Sciophila ornata* Mgn. hypopygium ex alto.  
" 60. " " " " ab imo.

Tablica V. (Table V).

- Fig. 61. *Sciophila tumida* Winn. hypopygium ex alto.  
" 62. " " " " ab imo.  
" 63. *Lasiosoma pilosa* Mgn. hypopygium ex alto.  
" 64. " " " " ex alto.  
" 65. " " " ovipositor.  
" 66. *Lasiosoma hirta* Hyg. hypopygium ex alto.  
" 67. " " " " ab imo.  
" 68. *Lasiosoma thoracica* Staeg. hypopygium ex alto.  
" 69. " " " " ab imo.  
" 70. " " " ovipositor.  
" 71. *Lasiosoma analis* Winn. hypopygium ex alto.  
" 72. " " " " ab imo.

Tablica VI. (Table VI).

- Fig. 73. *Lasiosoma interrupta* Winn. hypopygium ex alto.  
" 74. " " " " ab imo.  
" 75. *Lasiosoma tenuis* Winn. ovipositor.  
" 76. *Lasiosoma lutea* Macq. ovipositor.  
" 77. *Lasiosoma varia* Winn. ovipositor.  
" 78. *Boletina dispar* Winn. hypopygium ex alto.  
" 79. " " " " ab imo.  
" 80. " " " forceps.  
" 81. " " " appendix interna.  
" 82. *Boletina trivittata* Mgn. hypopygium ex alto.  
" 83. " " " " ab imo.  
" 84. " " " forceps.  
" 85. " " " appendix interna.  
" 86. " " " ovipositor.

Tablica VII. (Table VII).

- Fig. 87. *Boletina basalis* Mgn. hypopygium ex alto.  
" 88. " " " " ab imo.  
" 89. " " " forceps.



- Fig. 90. *Boletina basalis* Mgn. appendix interna.  
 " 91. " *sciarina* Staeg. hypopygium ex alto.  
 " 92. " " " " ab imo.  
 " 93. " " " forceps.  
 " 94. " " " appendix interna.  
 " 95. *Rymosia fenestralis* Mgn. hypopygium ex alto.  
 " 96. " " " " ab imo.  
 " 97. *Rymosia maculosa* Mgn. hypopygium ex alto.  
 " 98. " " " " ab imo.  
 " 99. " " " ovipositor.  
 " 100. *Rymosia setiger* Winn. in litt. hypopygium ex alto.

Tablica VIII. (Table VIII).

- Fig. 101. *Rymosia setiger* Winn. in litt. hypopygium ex alto.  
 " 102. " " " metatarsus pedis antici ♂  
 " 103. " " " ovipositor.  
 " 104. *Rymosia discoidea* Mgn. hypopygium ex alto.  
 " 105. " " " " ab imo.  
 " 106. " " " ovipositor.  
 " 107. *Rymosia cannexa* Winn. hypopygium ex alto.  
 " 108. " " " " ab imo.  
 " 109. *Rymosia domestica* Mgn. hypopygium ex alto.  
 " 110. " " " " ab imo.  
 " 111. *Rymosia spinipes* Winn. hypopygium ex alto.  
 " 112. " " " " ab imo.  
 " 113. " " " ovipositor.  
 " 114. *Rymosia cristata* Staeg. "  
 " 115. *Rymosia truncata* Winn. hypopygium ex alto.

Tablica IX. (Table IX).

- Fig. 116. *Rymosia truncata* Winn. hypopygium ab imo.  
 " 117. " " " ovipositor.  
 " 118. *Allodia ornatcollis* Mgn., Meg. hypopygium ex alto.  
 " 119. " " " " ab imo.  
 " 120. " " " " ovipositor.  
 " 121. *Allodia obscura* Winn. hypopygium ex alto.  
 " 122. " " " " ab imo.  
 " 123. " " " ovipositor.  
 " 124. " " " pars basalis infera.  
 " 125. *Allodia crassicornis* Stann. } hypopygium ex alto.  
 " *punctipes* Staeg. }  
 " 126. " " " " ab imo.

- Fig. 127. *Brachycampta bicolor* Macq. hypopygium ex alto.  
 " 128. " " " " ab imo.  
 " 129. *Brachycampta alterans* Zett. " ex alto.  
 " 130. " " " " ab imo.

Tablica X. (Table X).

- Fig. 131. *Brachycampta alterans* Zett. ovipositor.  
 " 132. *Brachycampta brachycera* Zett. hypopygium ex alto.  
 " 133. " " " " ab imo.  
 " 134. *Brachycampta amoena* Winn. hypopygium ex alto.  
 " 135. " " " " ab imo.  
 " 136. *Brachycampta hastata* Winn. hypopygium ex alto.  
 " 137. " " " " ab imo.  
 " 138. *Brachycampta serena* Winn. hypopygium ex alto.  
 " 139. " " " " ab imo.  
 " 140. *Trichonta melanura* Staeg. hypopygium ex alto.  
 " 141. " " " " ab imo.  
 " 142. " " " appendix interna.  
 " 143. " " " lamella anterior et posterior.  
 " 144. *Trichonta albescens* Winn. in litt, hypopygium ex alto.  
 " 145. " " " " " ab imo.  
 " 146. *Trichonta submaculata* Staeg. }  
       *Trichonta trossula* Winn. } hypopygium ex alto.  
       " *umbratica* Winn. }  
 " 147. " " " " ab imo.  
 " 148. *Trichonta funebris* Winn. " ex alto.

Tablica XI. (Table XI).

- Fig. 149. *Trichonta funebris* Winn. hypopygium ab imo.  
 " 150. *Trichonta simplex* Winn. lamella anterior et posterior.  
 Fig. 151. *Phronia basalis* Winn. }  
           " *laeta* Winn. } hypopygium ex alto.  
 " 152. " " " " ab imo.  
 " 153. " " " forceps superior et inferior conjunctum.  
 " 154. " " " ovipositor.  
 " 155. " " " pars basalis infera.  
 " 156. *Phronia austriaca* Winn. ovipositor.  
 " 157. " " " lamella posterior et anterior.  
 " 158. " " " pars basalis infera.  
 " 159. *Phronia crassipes* Winn. ovipositor.  
 " 160. " " " lamella anterior et posterior.  
 " 161. " " " pars basalis infera.

- Fig. 162. *Phronia crassipes* Winn. pars basalis supera.  
 " 163. " *annulata* Winn. } ovipositor.  
 " " " " }  
 " 164. " " " " pars basalis infera.  
 " 165. " " " " " infera.  
 " 166. *Phronia flavipes* Winn. hypopygium ex alto.  
 " 167. " " " " ab imo.  
 " 168. " " " " forceps inferior.

Tablica XII. (Table XII).

- Fig. 169. *Phronia vitiosa* Winn. hypopygium ex alto.  
 " 170. " " " " ab imo.  
 " 171. " " " forceps superior et inferior conjunctum.  
 " 172. " " " appendix interna.  
 " 173. *Phronia flavicollis* Winn. ovipositor.  
 " 174. " " " pars basalis supera.  
 " 175. " " " " " inferior.  
 " 176. *Phronia forcipula* Winn. hypopygium ex alto.  
 " 177. " " " " ab imo.  
 " 178. " " " forceps inferior.  
 " 179. *Phronia strenua* Winn. hypopygium ex alto  
 " 180. " " " " ab imo.  
 " 181. " " " forceps inferior.  
 " 182. *Phronia rustica* Winn. } hypopygium ex alto  
 " *longipes* Winn. }  
 " 183. " " " " ab imo.  
 " 184. " " " forceps inferior.

Tablica XIII. (Table XIII).

- Fig. 185. *Phronia rustica* Winn. } ovipositor.  
 " *longipes* Winn. }  
 " 186. " " lamella posterior.  
 " 187. " " pars basalis supera.  
 " 188. " " " " infera.  
 " 189. " *tenuis* Winn. hypopygium ex alto.  
 " 190. " " " " ab imo.  
 " 191. " " " forceps inferior.  
 " 192. " " " ovipositor.  
 " 193. " " " lamella posterior.  
 " 194. " " " pars basalis supera,  
 " 195. " " " " " infera.  
 " 196. *Phronia cinerascens* Winn. } hypopygium ex alto.  
 " *truncata* Winn. }

- Fig. 197. *Phronia truncata* Winn. hypopygium ab imo.  
" 198. " " " forceps inferior.  
" 199. " " " ovipositor.  
" 200. *Phronia forcipata* Winn. hypopygium ex alto.  
" 201. " " " " ab imo.  
" 202. " " " forceps inferior.  
" 203. *Phronia nitidiventris* r. d. Wp. hypopygium ex alto.

Tablica XIV. (Table XIV).

- Fig. 204. *Phronia nitidiventris* r. d. Wp. hypopygium ab imo.  
" 205. " " " forceps inferior.  
" 206. " " " " superior.  
" 207. *Phronia signata* Winn. hypopygium ex alto.  
" 208. " " " " ab imo.  
" 209. " " " forceps inferior.  
" 210. *Phronia obtusa* Winn. hypopygium ex alto.  
" 211. " " " " ab imo.  
" 212. " " " forceps inferior.  
" 213. " " " " superior.  
" 214. *Phronia squalida* Winn. ovipositor.  
" 215. " " " lamella posterior.  
" 216. " " " pars basalis infera.  
" 217. *Exechia pallida* Stann. hypopygium ex alto.  
" 218. " " " " ab imo.  
" 219. " " " ovipositor.

Tablica XV. (Table XV).

- Fig. 220. *Exechia ventralis* Winn. in litt., hypopygium ex alto.  
" 221. " " " " " " ab imo.  
" 222. *Exechia maculipennis* Stann. hypopygium ex alto.  
" 223. " " " " " ab imo.  
" 224. *Exechia contaminata* Winn. hypopygium ex alto.  
" 225. " " " " " ab imo.  
" 226. " " " " ovipositor.  
" 227. " " " " pars basalis infera.  
" 228. *Exechia lucidula* Zett. hypopygium ex alto.  
" 229. " " " " " ab imo.  
" 230. *Exechia cincta* Winn. hypopygium ex alto.  
" 231. " " " " " ab imo.  
" 232. *Exechia bicincta* Staeg. ovipositor.  
" 233. " " " " pars basalis infera.  
" 234. *Exechia intersecta* Hgg. hypopygium ex alto.

- Fig. 235. *Exechia intersecta* Hgg. hypopygium ab imo.  
" 236. *Exechia interrupta* Zett. hypopygium ex alto.  
" 237. " " " " ab imo.

Tablica XVI. (Table XVI).

- Fig. 238. *Exechia interrupta* Zett. ovipositor.  
" 239. " " " pars basalis infera.  
" 240. *Exechia trivittata* Staeg. hypopygium ex alto.  
" 241. " " " " ab imo.  
" 242. " " " ovipositor.  
" 243. *Exechia festiva* Winn. hypopygium ex alto.  
" 244. " " " " ab imo.  
" 245. *Exechia tenuicornis* v. d. Wp. hypopygium ex alto.  
" 246. " " " " ab imo.  
" 247. " " " ovipositor.  
" 248. " " " pars basalis infera.  
" 249. *Exechia dorsalis* Staeg. hypopygium ex alto.  
" 250. " " " " ab imo.  
" 251. " " " ovipositor.  
" 252. " " " pars basalis infera.  
" 253. *Exechia lateralis* Mgn. hypopygium ex alto.

Tablica XVII. (Table XVII).

- Fig. 254. *Exechia lateralis* Mgn. hypopygium ab imo.  
" 255. " " " ovipositor.  
" 256. " " " lamina basalis infera.  
" 257. " " " lamella anterior et posterior.  
" 258. *Exechia subulata* Winn. hypopygium ex alto.  
" 259. " " " " ab imo.  
" 260. *Exechia leptura* Mgn. hypopygium ex alto.  
" 261. " " " " ab imo.  
" 262. \**Exechia pulchella* Winn. hypopygium ex alto.  
" 263. " " " " ab imo.  
" 264. " " " ovipositor.  
" 265. " " " lamella anterior et posterior.  
" 266. *Exechia fungorum* Deg. hypopygium ex alto.  
" 267. " " " " ab imo.  
" 268. " " " ovipositor.  
" 269. " " " lamina basalis infera.  
" 270. *Exechia spinigera* Winn. hypopygium ex alto.  
" 271. " " " " ab imo.  
" 172. *Exechia confinis* Winn. " ex alto.

Tablica XVIII. (Table XVIII).

- Fig. 273. *Exechia confinis* Winn. hypopygium ab imo.  
" 274. *Mycetophila xanthopyga* Winn. hypopygium ex alto.  
" 275. " " " " ab imo.  
" 276. " " " " a latere.  
" 277. " " " " forceps superior.  
" 278. " " " " inferior.  
" 279. " " " " alae.  
" 280. *Mycetophila bimaculata* Fabr. hypopygium ex alto.  
" 281. " " " " ab imo.  
" 282. " " " " forceps superior et inferior conjunctum.  
" 283. *Mycetophila lunata* Mgn. hypopygium ex alto.  
" 284. " " " " ab imo.  
" 285. " " " " forceps superior.  
" 286. " " " " inferior.  
" 287. *Mycetophila gratiosa* Winn. hypopygium ex alto.  
" 288. " " " " ab imo.

Tablica XIX. (Table XIX).

- Fig. 289. *Mycetophila gratiosa* Winn. hypopygium a latere.  
" 290. " " " " alae.  
" 291. *Mycetophila rudis* Winn. " ex alto.  
" 292. " " " " ab imo.  
" 293. " " " " forceps inferior.  
" 294. " " " " superior.  
" 295. *Mycetophila fraterna* Winn. hypopygium ex alto.  
" 296. " " " " ab imo.  
" 297. " " " " forceps inferior.  
" 298. " " " " superior.  
" 299. *Mycetophila marginata* Winn. hypopygium ex alto.  
" 300. " " " " ab imo.  
" 301. " " " " forceps inferior.  
" 302. " " " " superior.

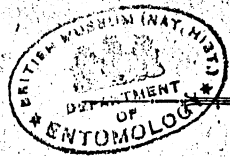
Tablica XX. (Table XX).

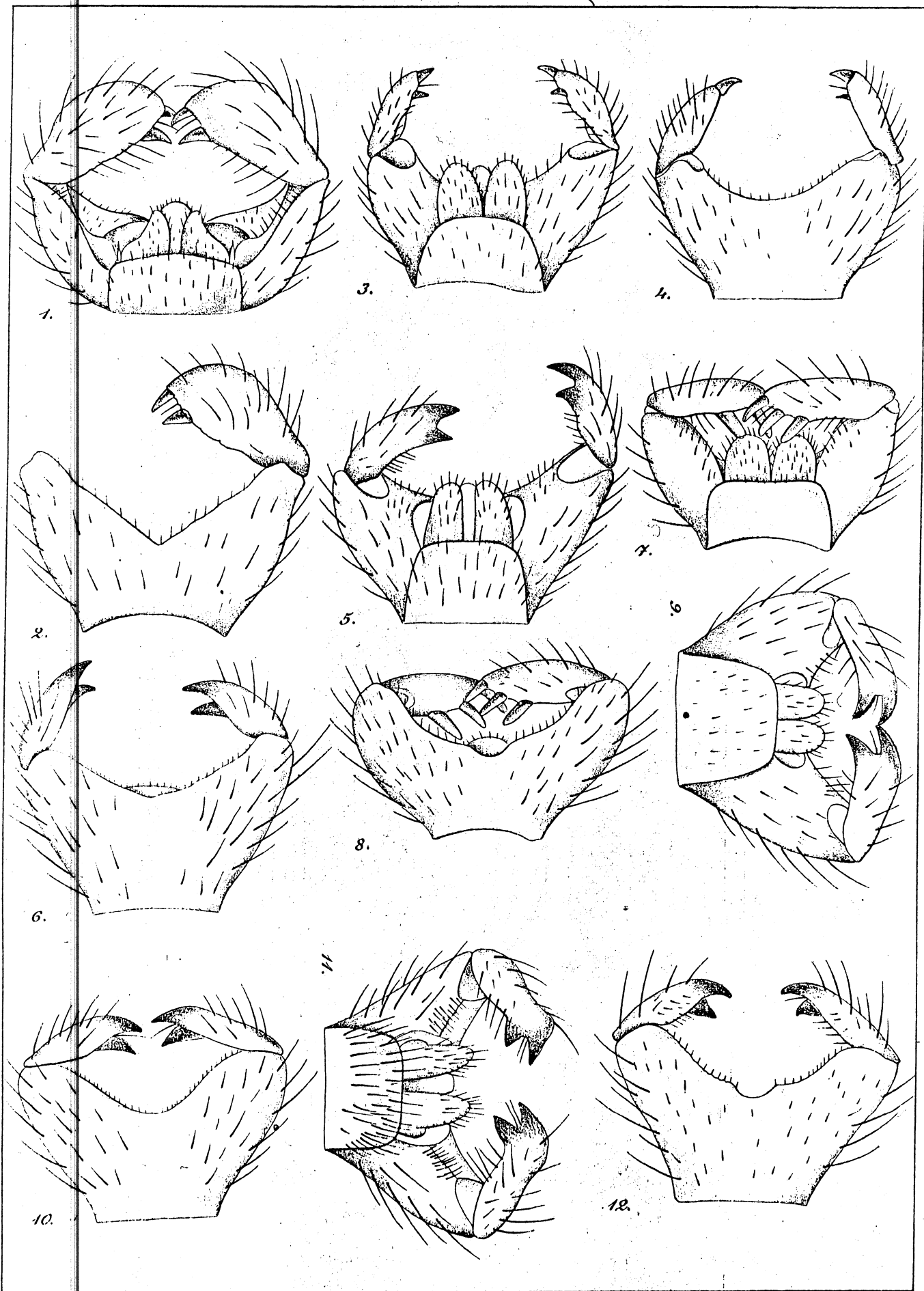
- Fig. 303. *Mycetophila unicolor* Stann. hypopygium ex alto.  
" 304. " " " " ab imo.  
" 305. " " " " forceps inferior.  
" 306. " " " " superior.  
" 307. *Mycetophila gibba* Winn. hypopygium ex alto.  
" 308. " " " " ab imo.

- Fig. 309. *Mycetophila gibba* Winn. forceps.  
 „ 310. „ „ „ alae.  
 „ 311. *Mycetophila blonda* Winn. hypopygium ex alto.  
 „ 312. „ „ „ „ ab imo.  
 „ 313. „ „ „ forceps inferior.  
 „ 314. „ „ „ „ superior.  
 „ 315. „ „ „ ovipositor.  
 „ 316. *Mycetophila stolidula* Walk? hypopygium ex alto.  
 „ 317. „ „ „ „ ab imo.  
 „ 318. „ „ „ forceps superior et inferior conjunctum.  
 „ 319. *Mycetophila fulva* Winn. alae.

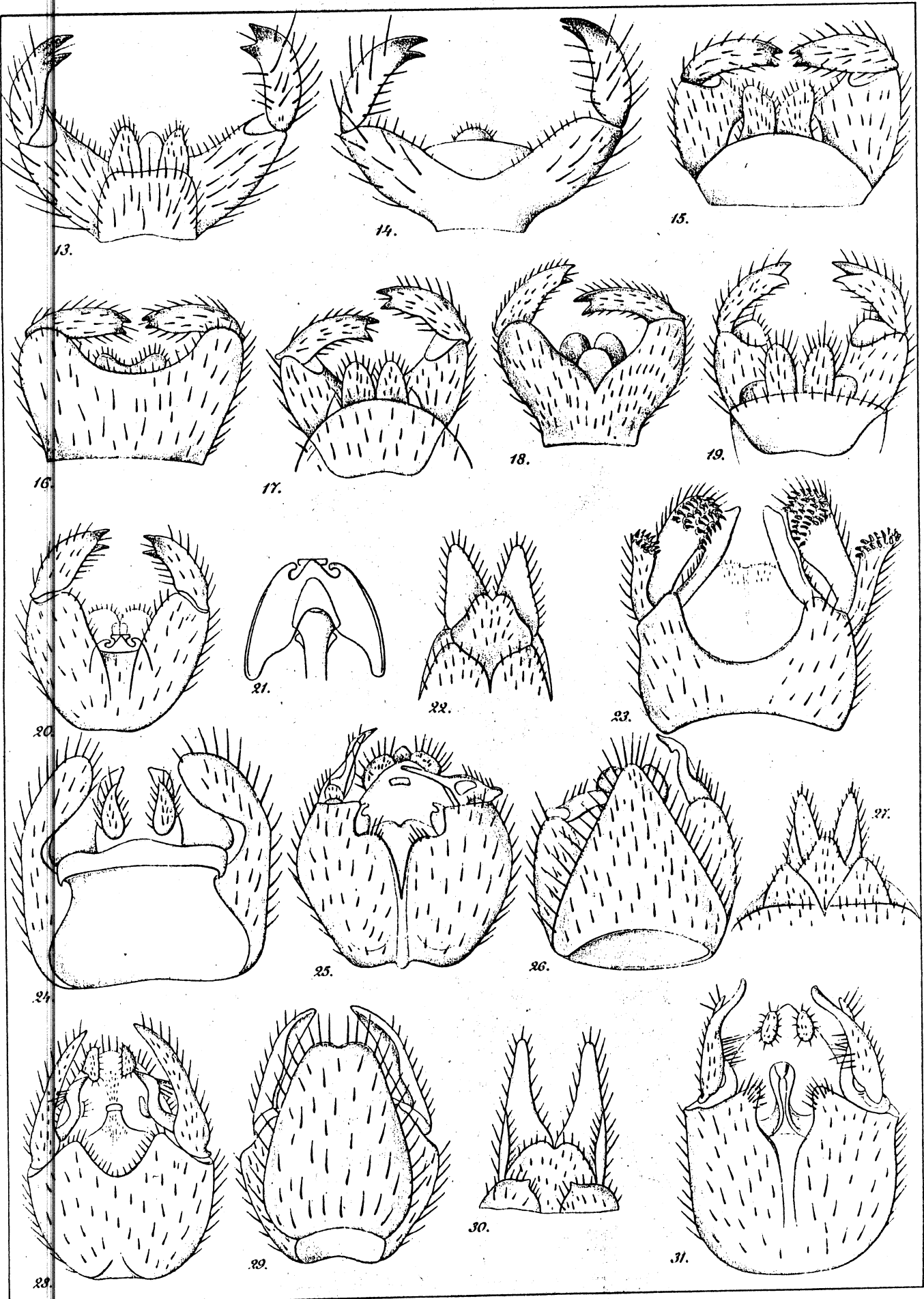
Tablica XXI. (Table XXI).

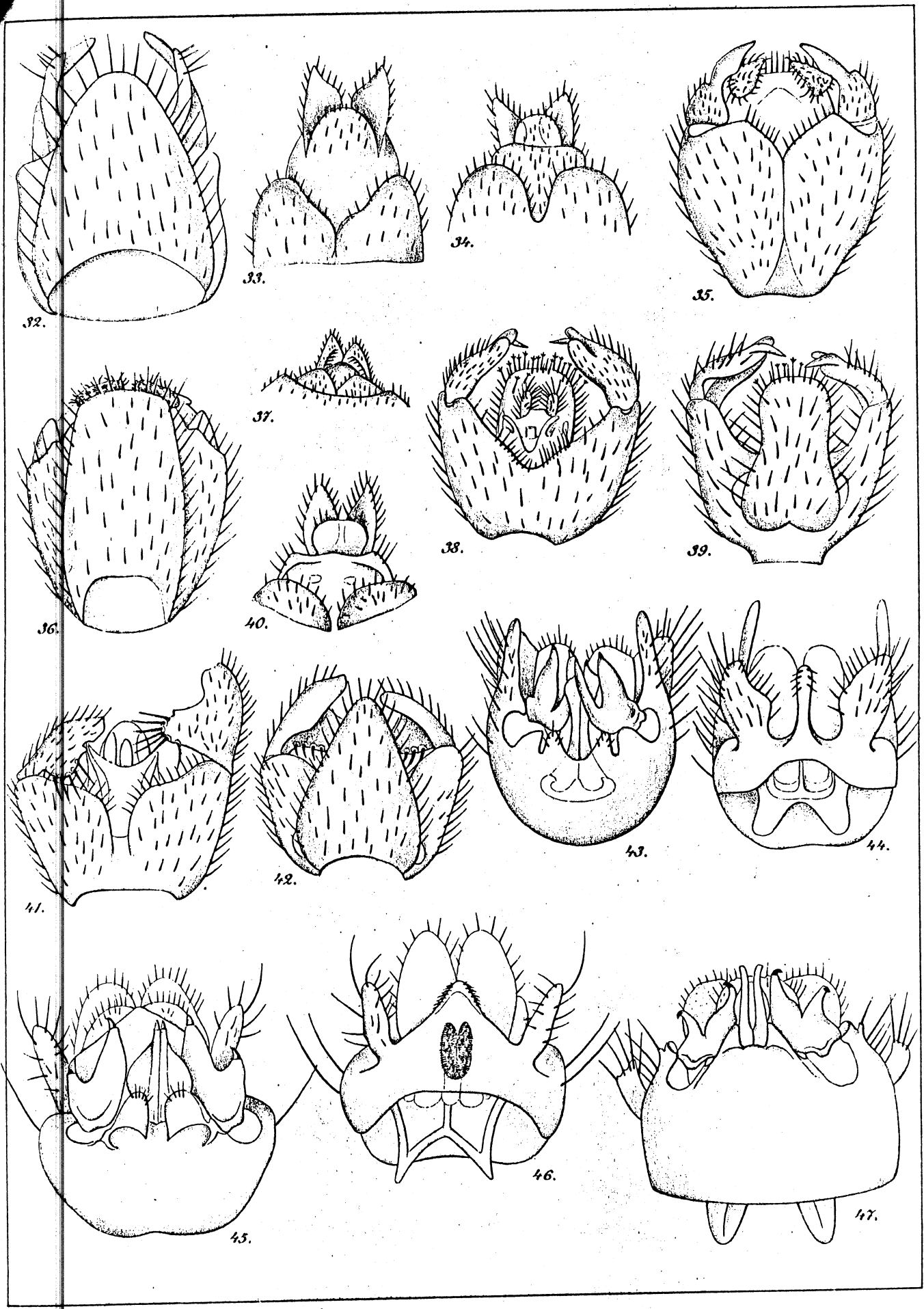
- Fig. 320. *Mycetophila tactuosa* Mgn. } hypopygium ex alto.  
 „ *modesta* Winn. }  
 „ 321. „ „ „ „ ab imo.  
 „ 322. „ „ „ forceps superior et inferior conjunctum.  
 „ 323. *Mycetophila spectabilis* Winn. hypopygium ex alto.  
 „ 324. „ „ „ „ ab imo.  
 „ 325. „ „ „ forceps superior.  
 „ 326. „ „ „ „ inferior.  
 „ 327. *Mycetophila vittipes* ♀ Zett. alae.  
 „ 328. *Mycetophila cingulum* Mgn. hypopygium ex alto.  
 „ 329. „ „ „ „ ab imo.  
 „ 330. „ „ „ forceps inferior.  
 „ 331. „ „ „ „ superior.  
 „ 332. *Mycetophila dimidiata* Staeg. hypopygium ex alto.  
 „ 333. „ „ „ „ ab imo.  
 „ 334. „ „ „ forceps inferior.  
 „ 335. „ „ „ „ superior.

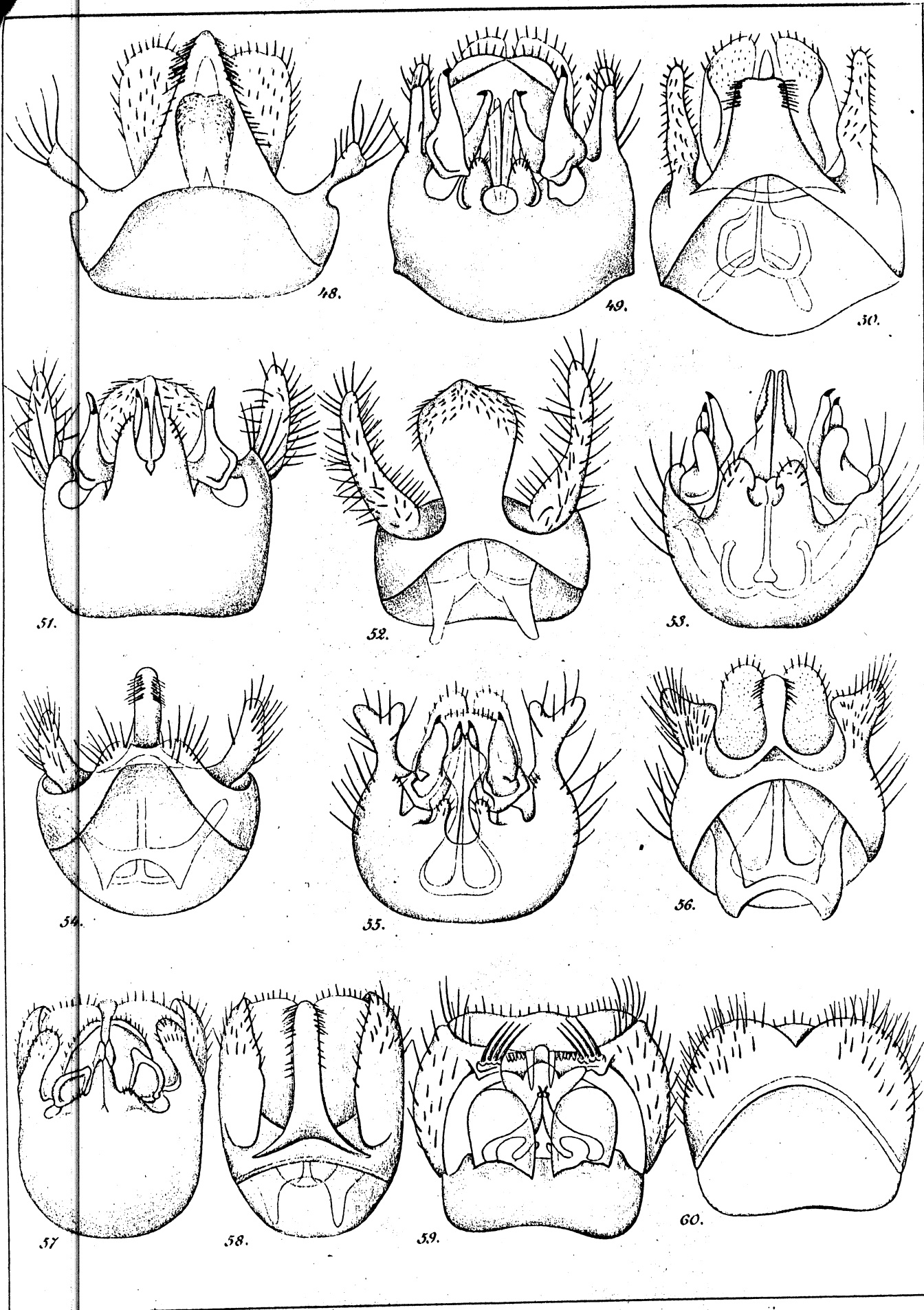


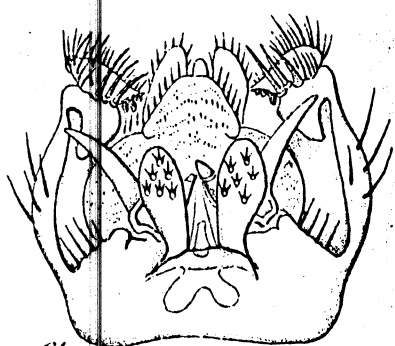




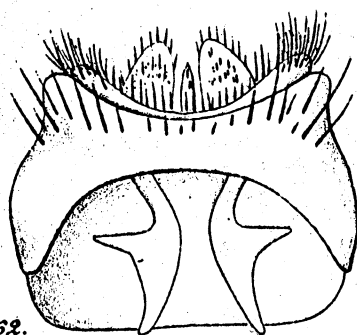




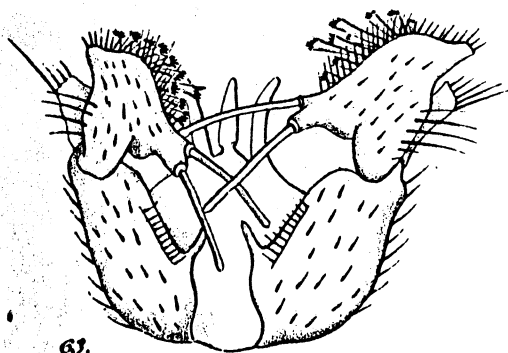




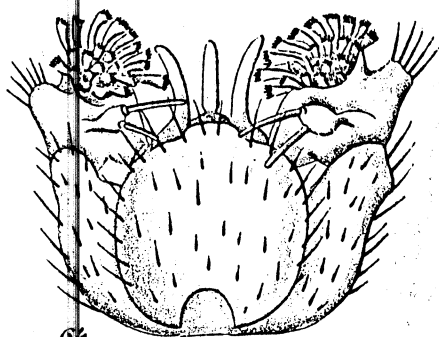
61.



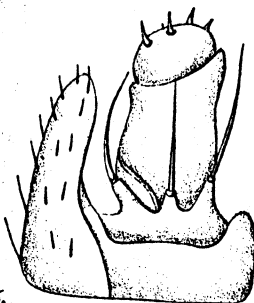
62.



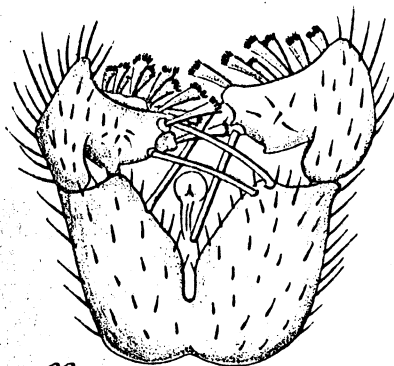
63.



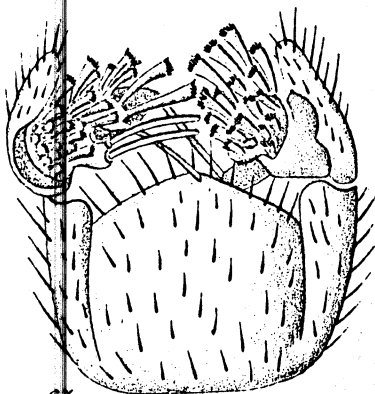
64.



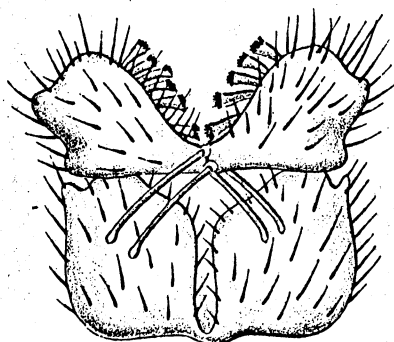
65.



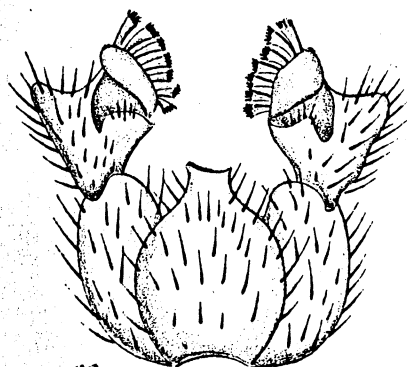
66.



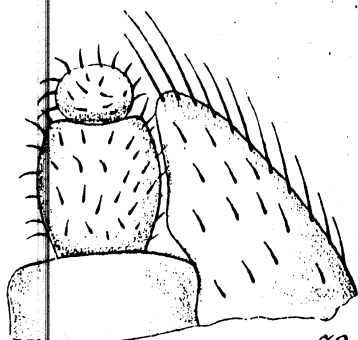
67.



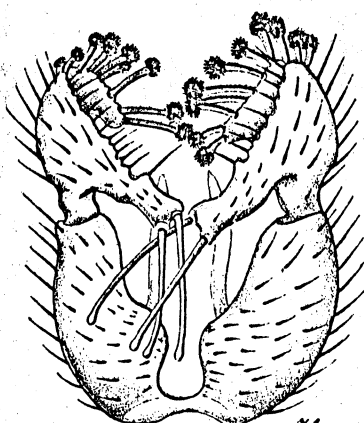
68.



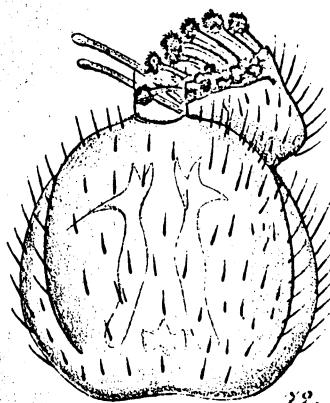
69.



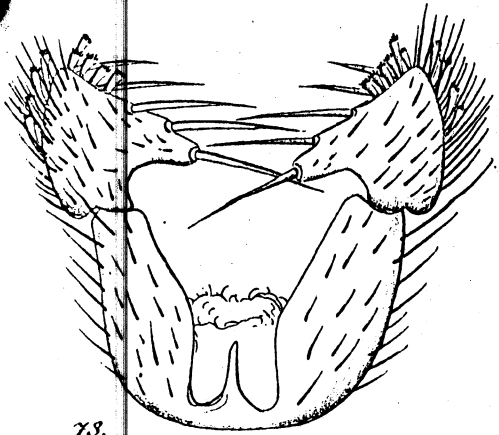
70.



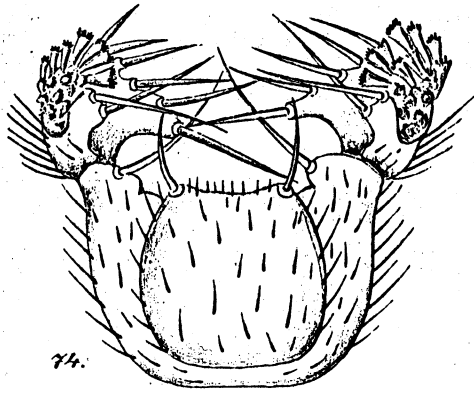
71.



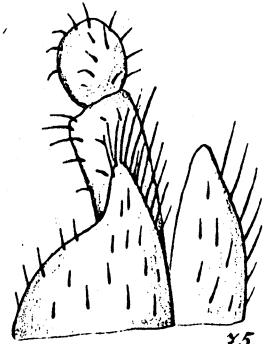
72.



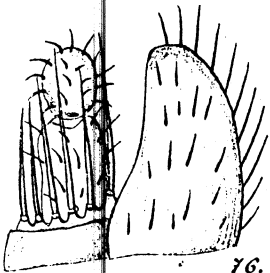
73.



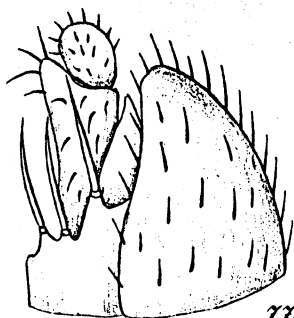
74.



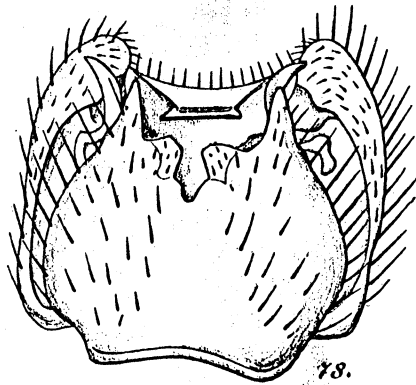
75.



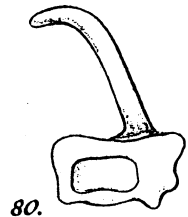
76.



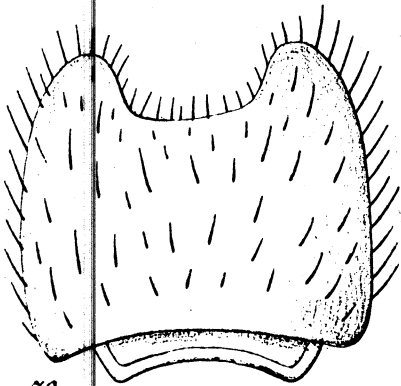
77.



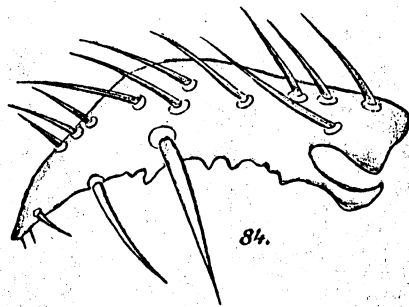
78.



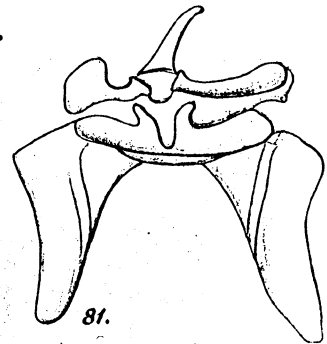
80.



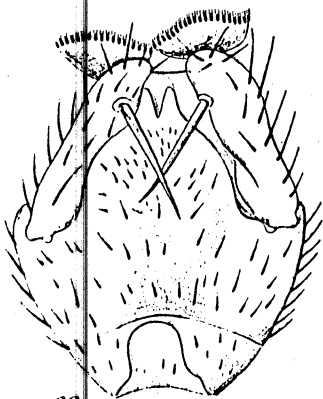
79.



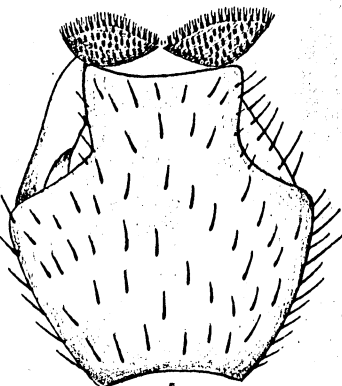
84.



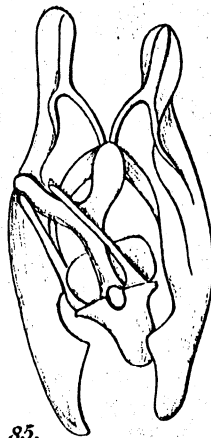
81.



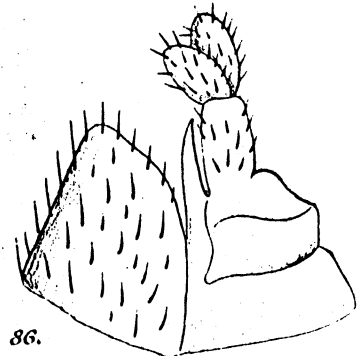
82.



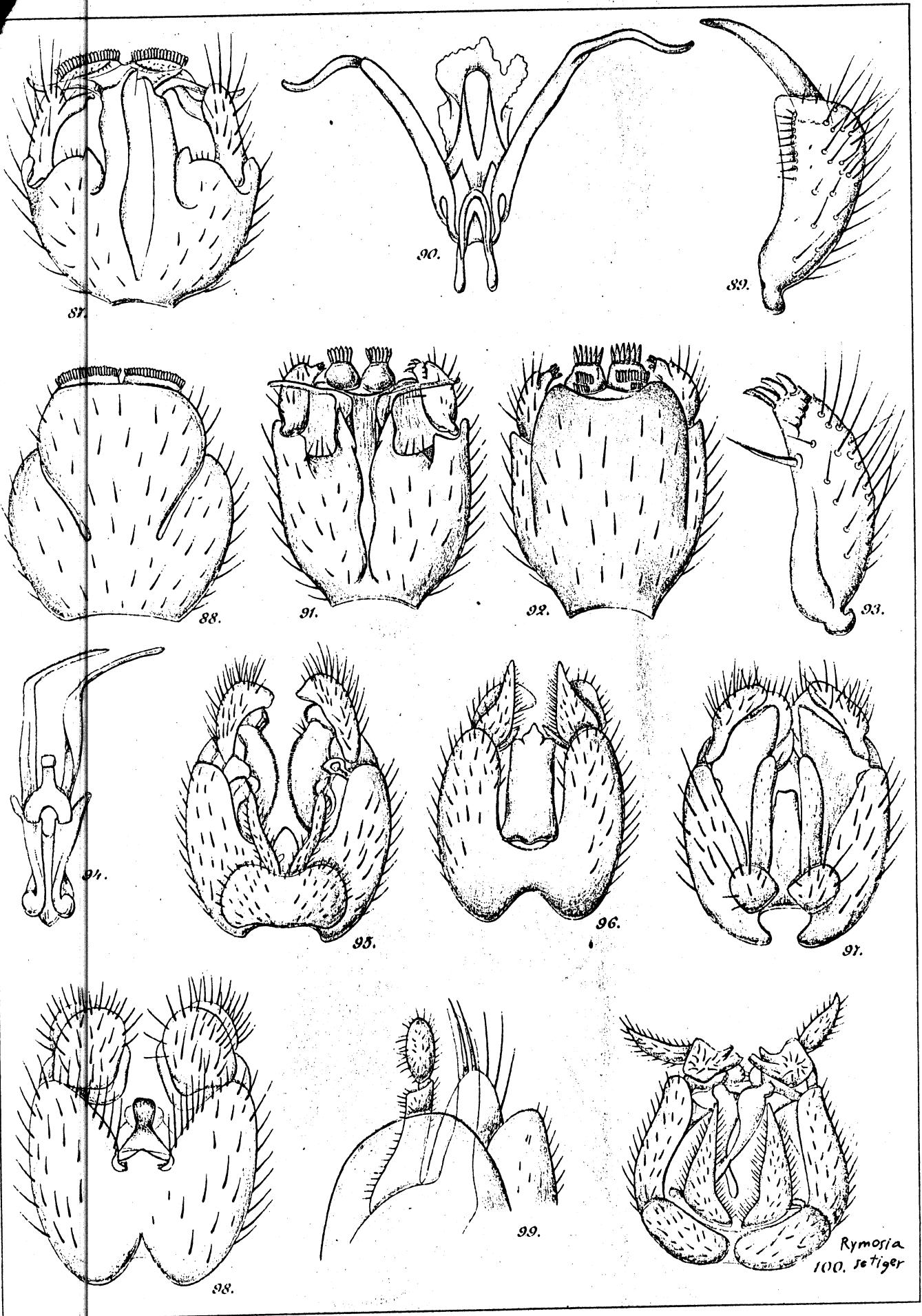
87.

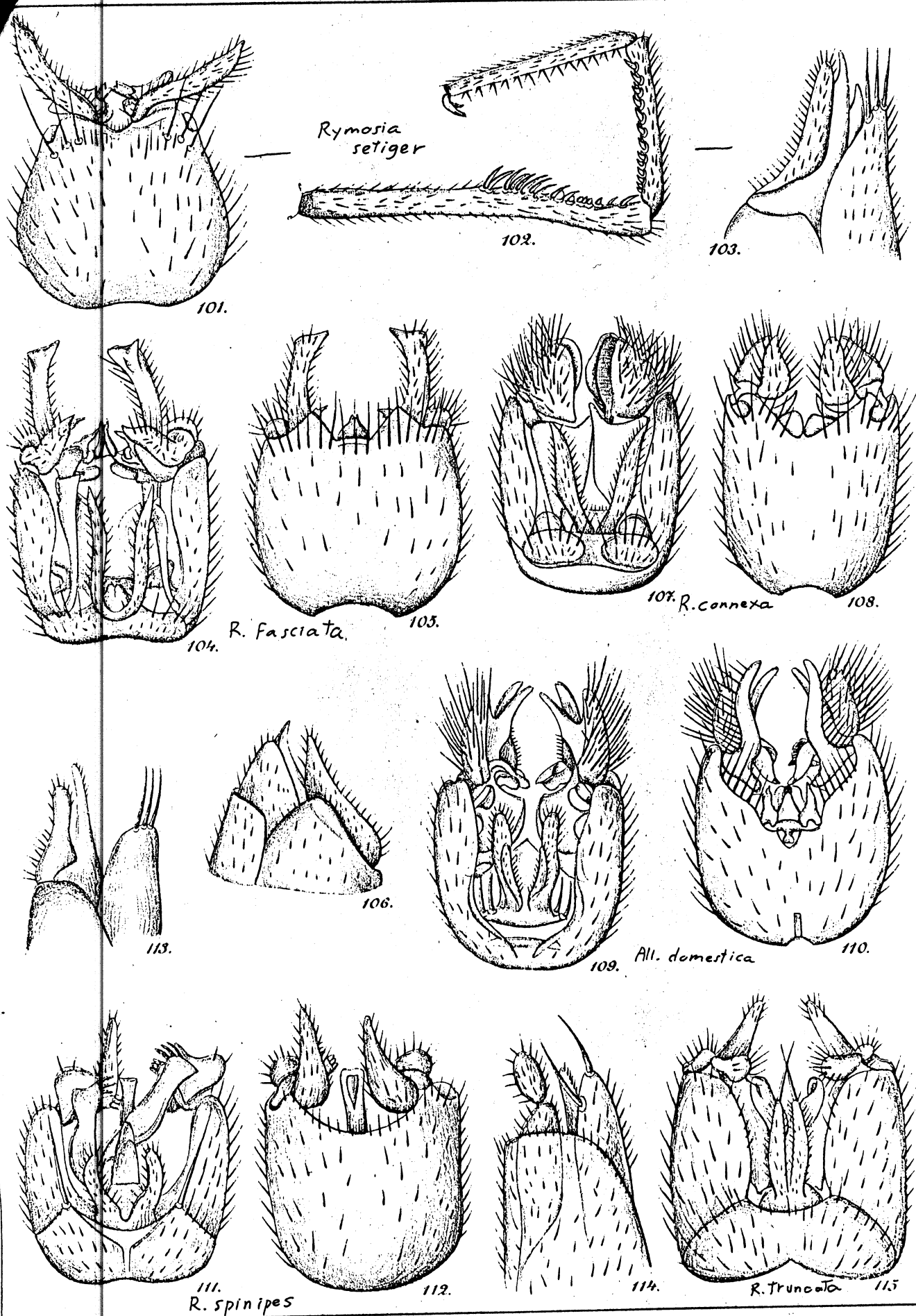


85.



86.





*Rymosia setiger*

101.

102.

103.

104.

*R. fasciata*

105.

107. *R. connexa*

108.

113.

106.

109.

*All. domestica*

110.

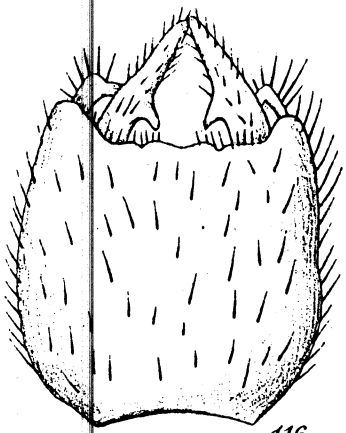
111. *R. spinipes*

112.

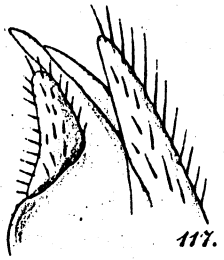
114.

*R. truncata*

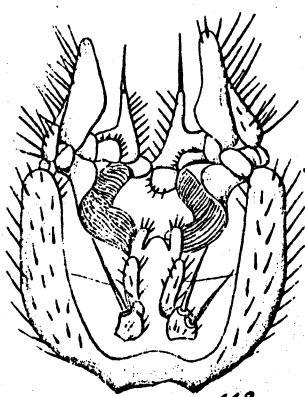
115.



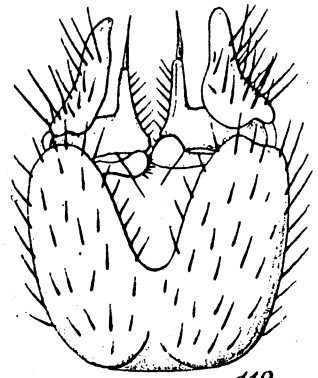
116.



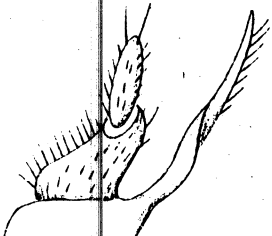
117.



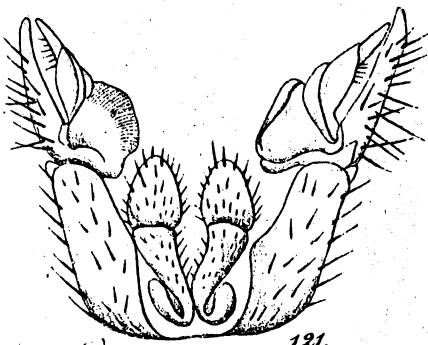
118.



119.

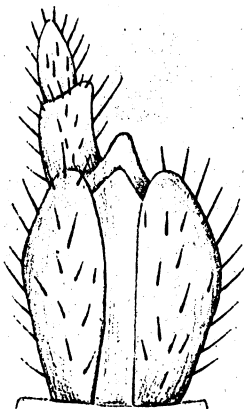


120.

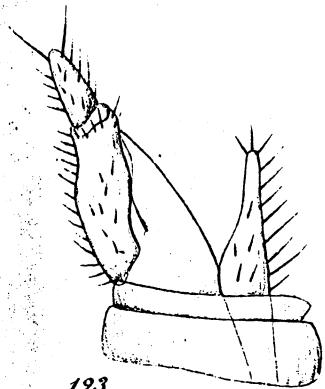


121.

*obscura* *Wain*



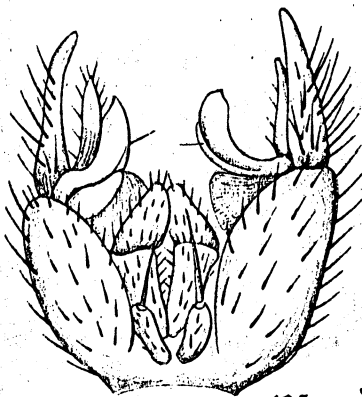
124.



123.



122.

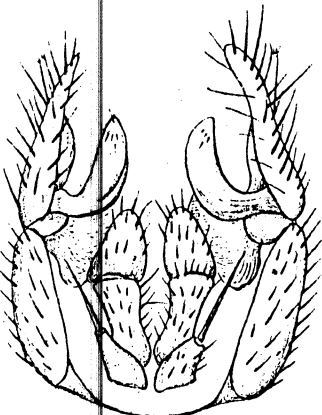


125.

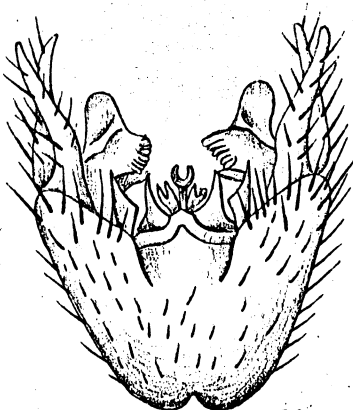
*cr. asiatica*



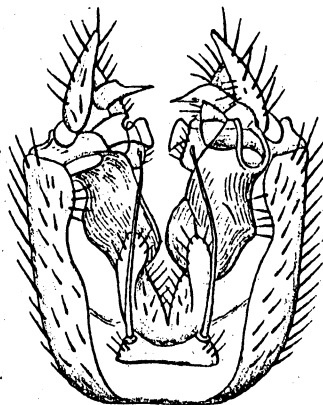
126.



127.

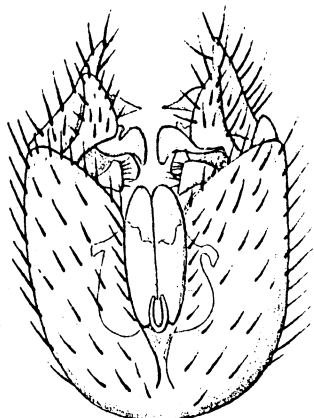


128.



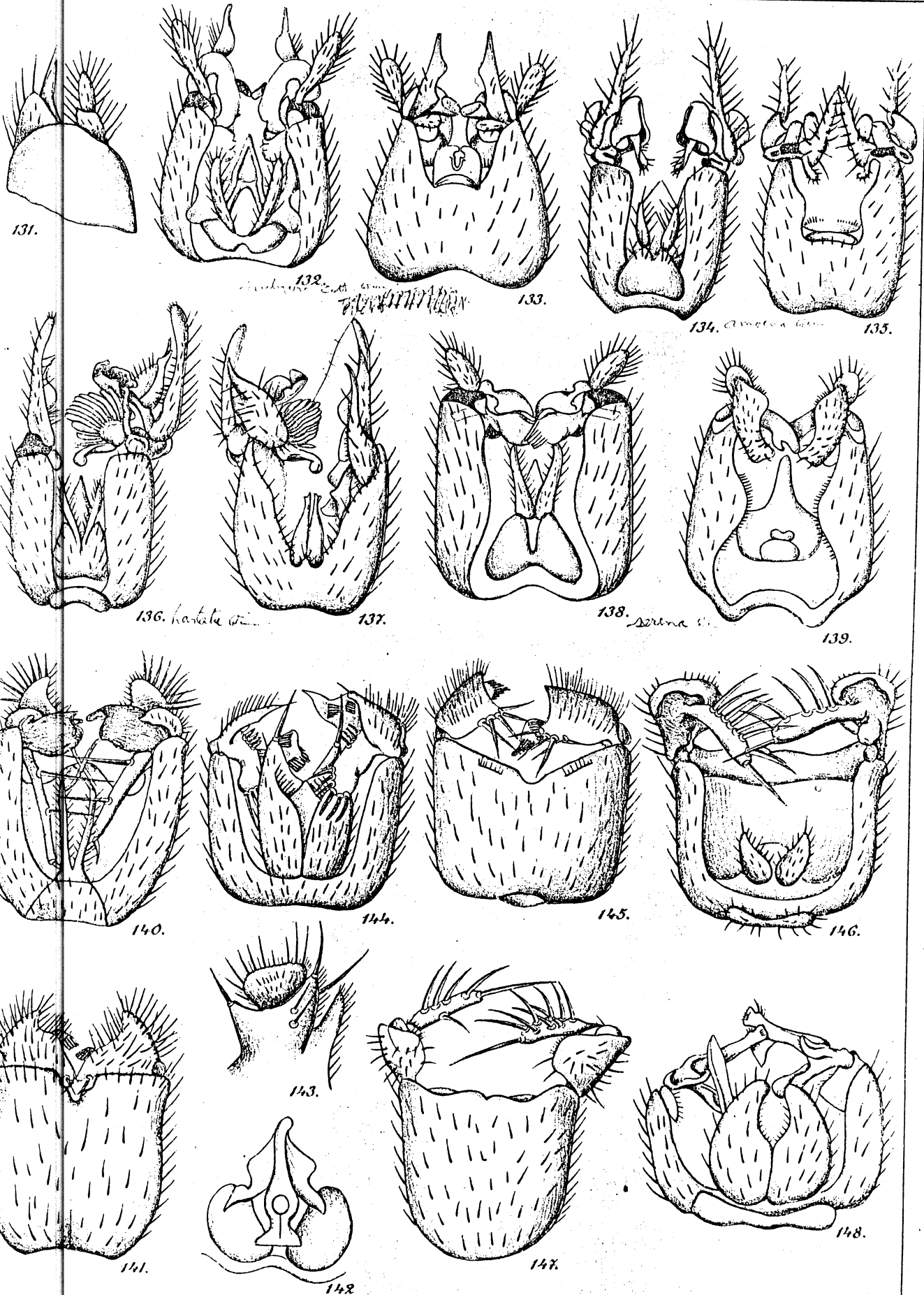
129.

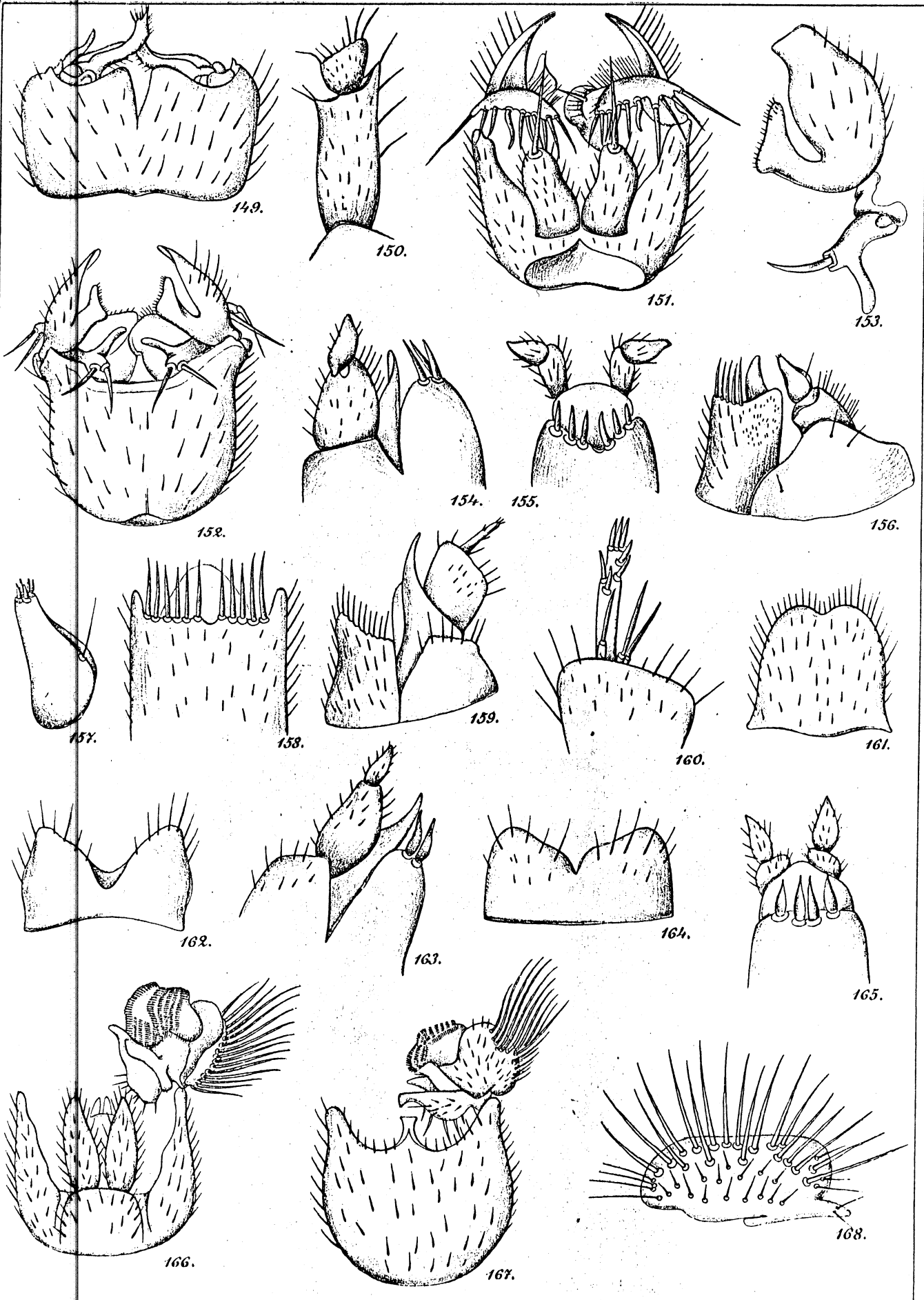
*albimana* *Wain*

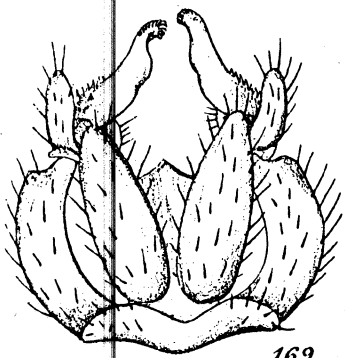


130.

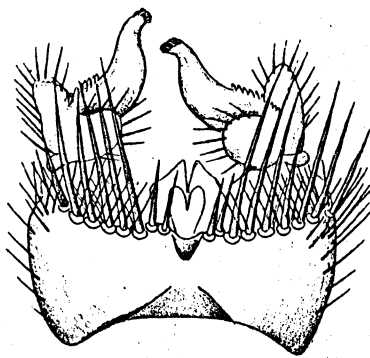




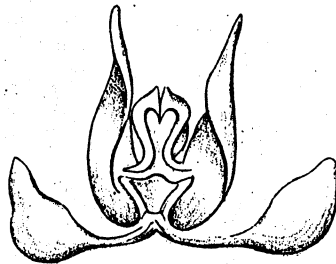




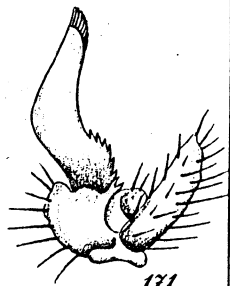
169.



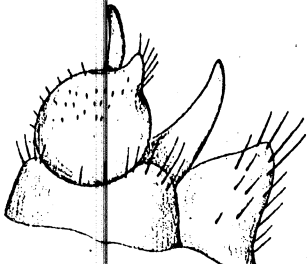
170.



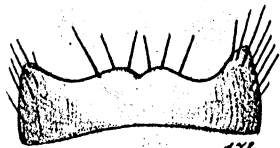
172.



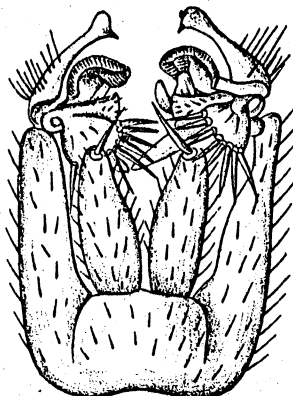
171.



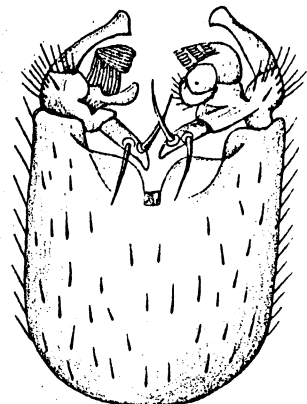
173.



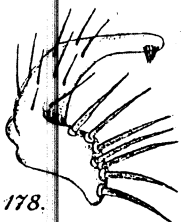
174.



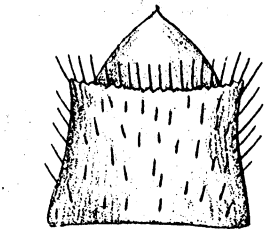
176.



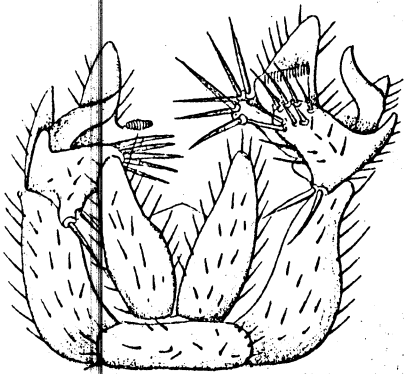
177.



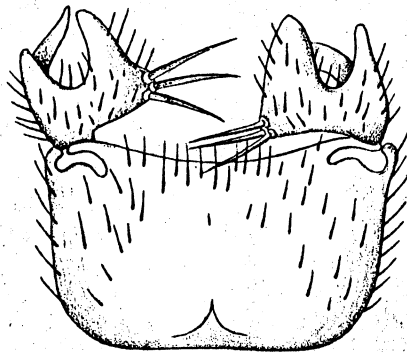
178.



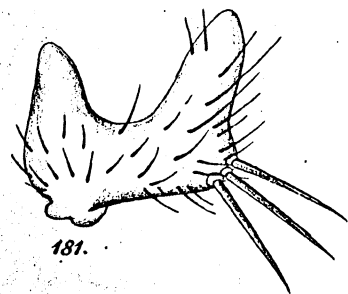
175.



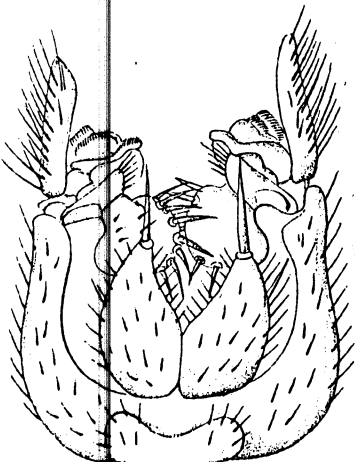
179.



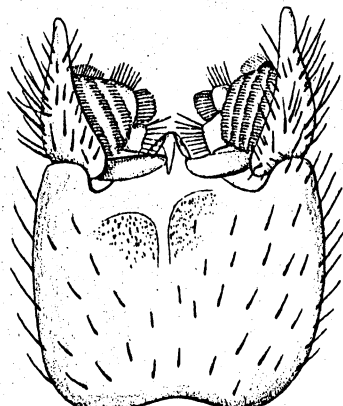
180.



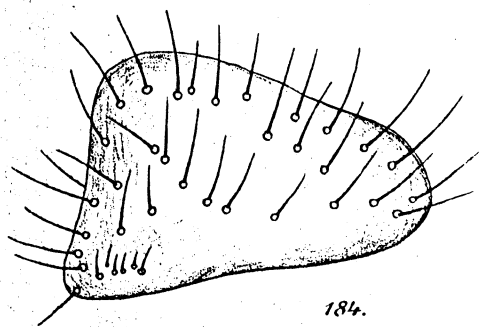
181.



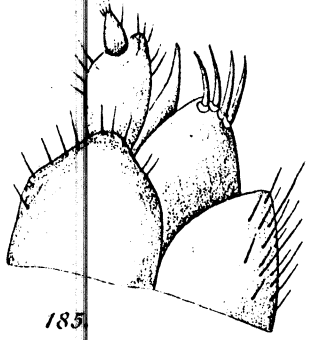
182.



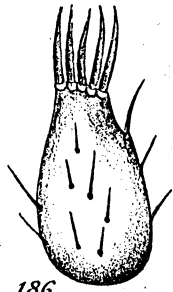
183.



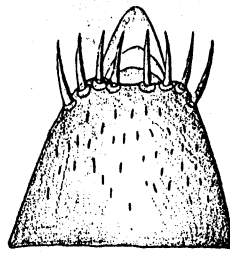
184.



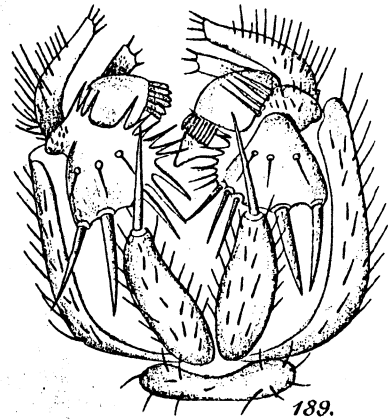
185.



186.



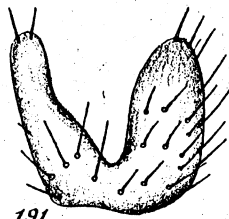
188.



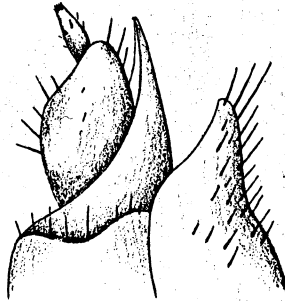
189.



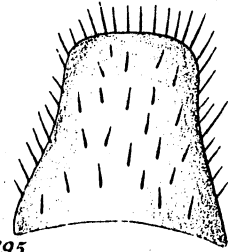
187.



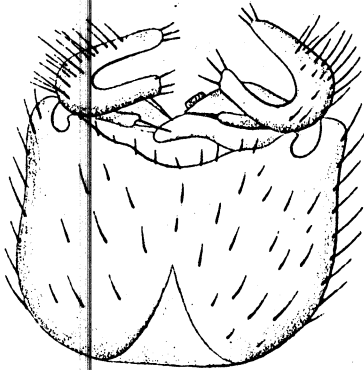
191.



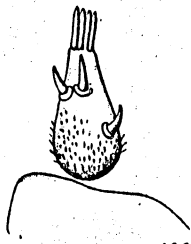
192.



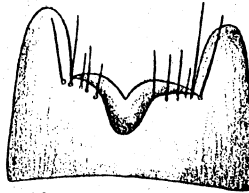
195.



190.



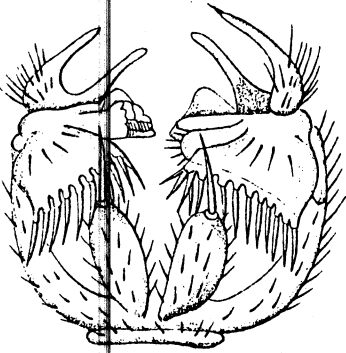
193.



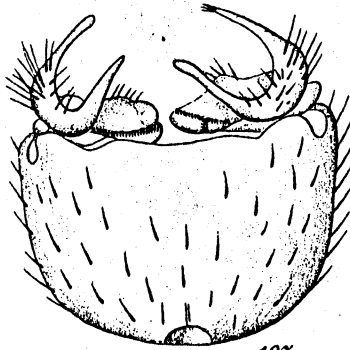
194.



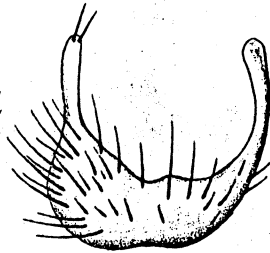
199.



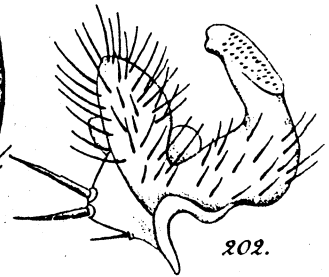
196.



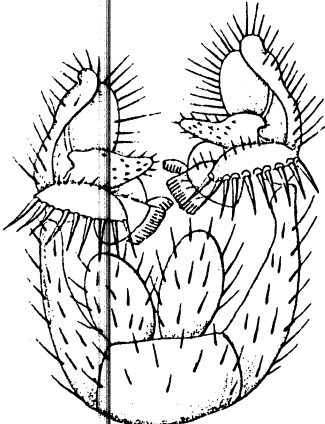
197.



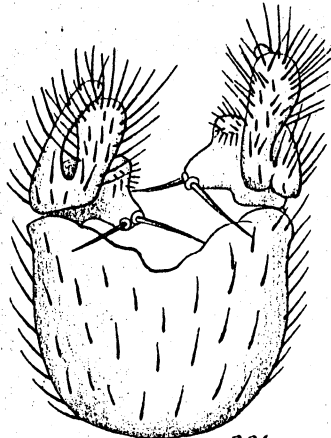
198.



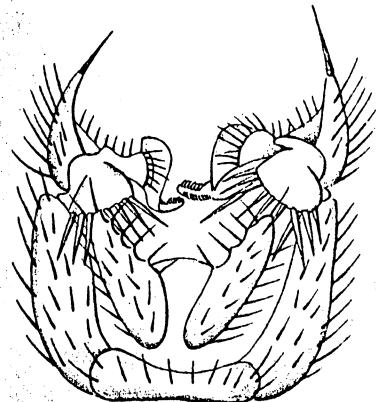
202.



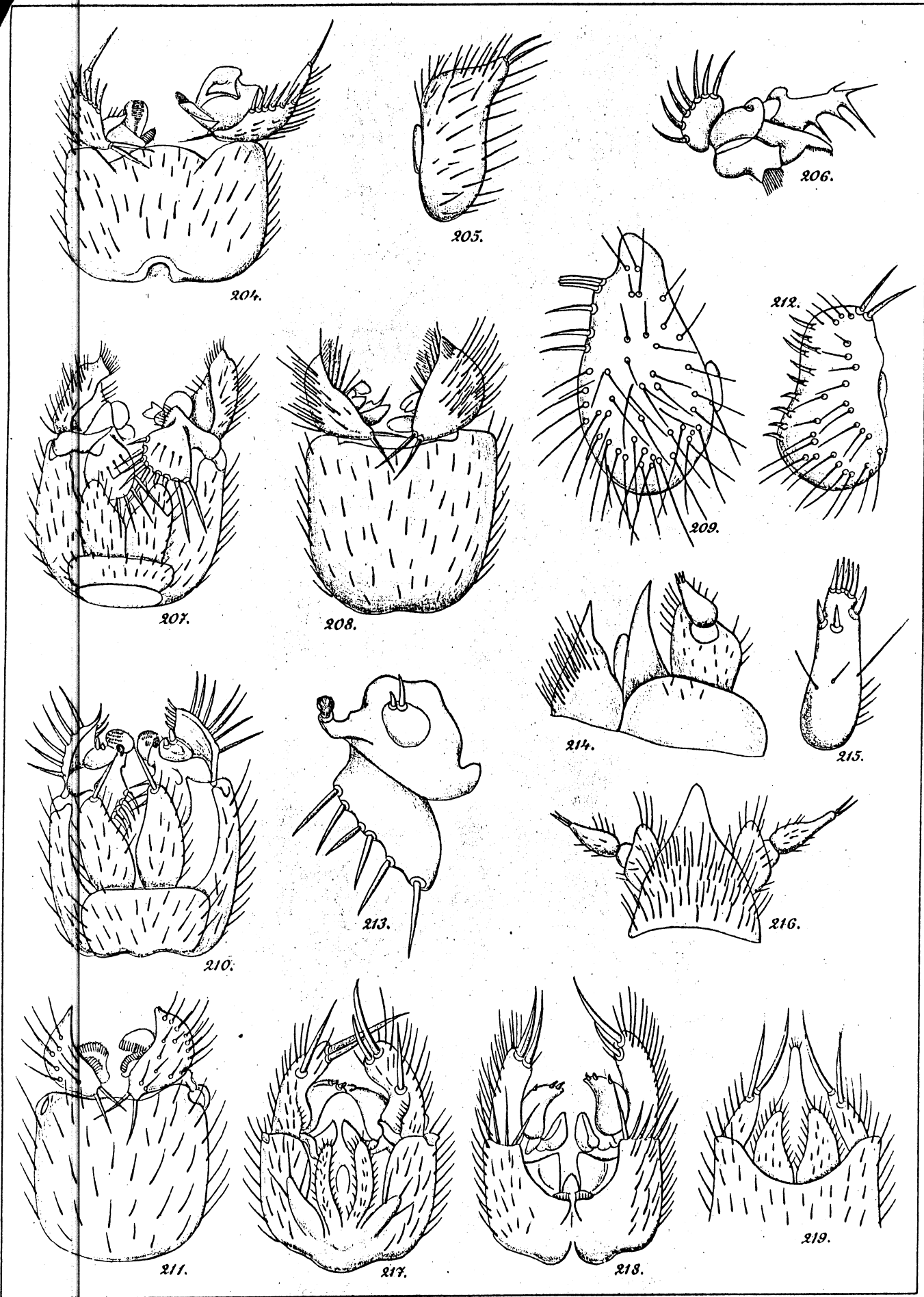
200.

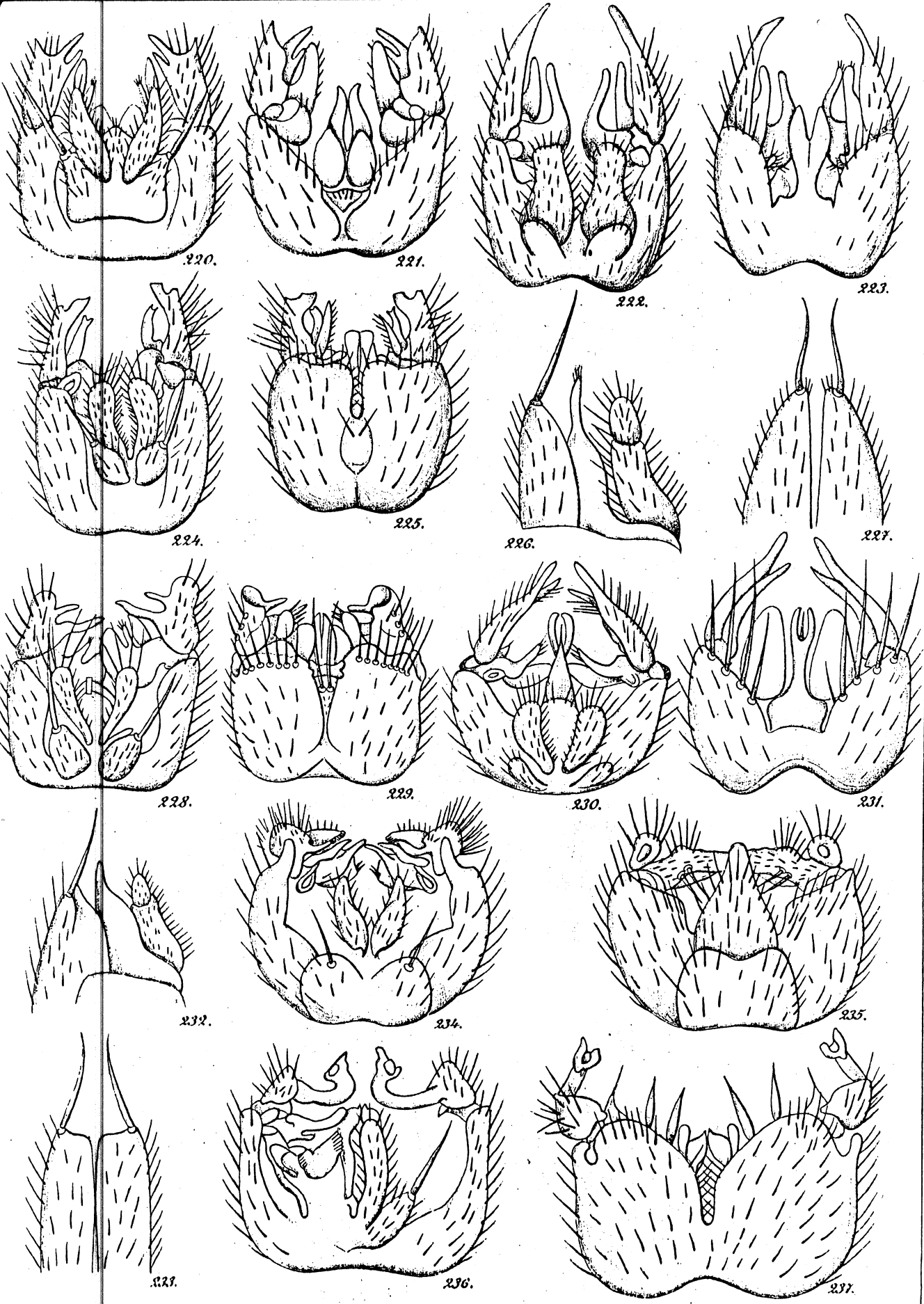


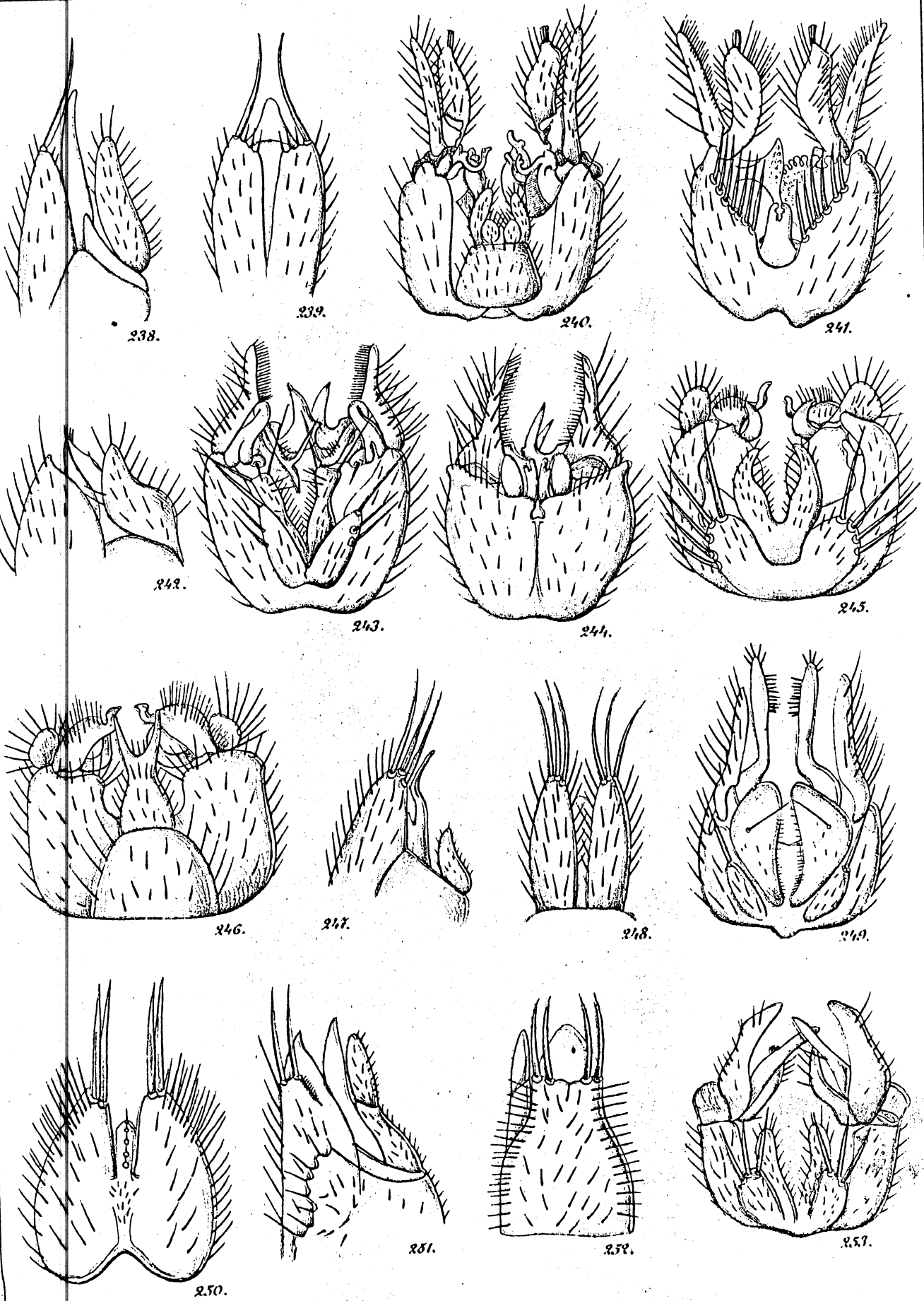
201.

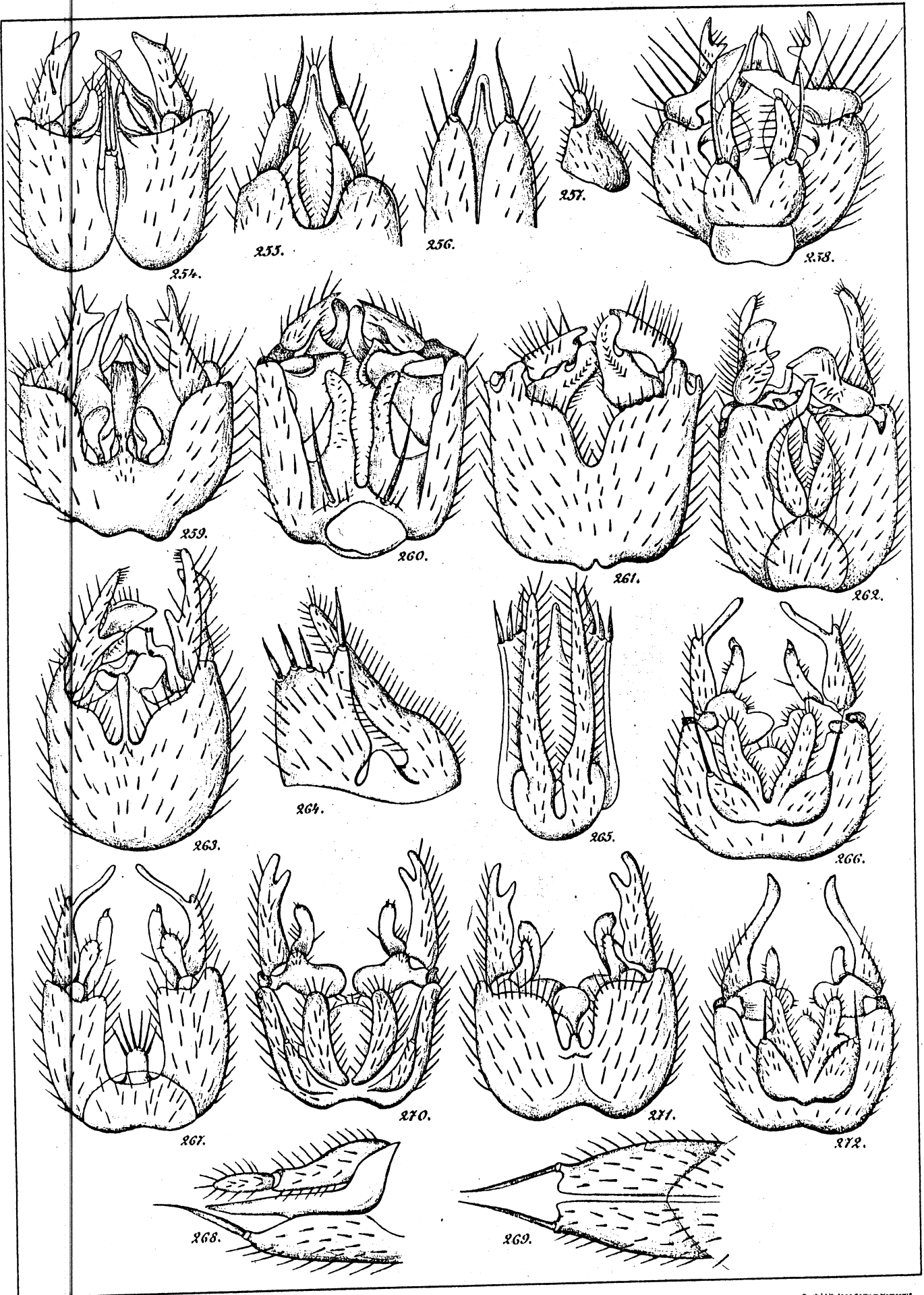


203.

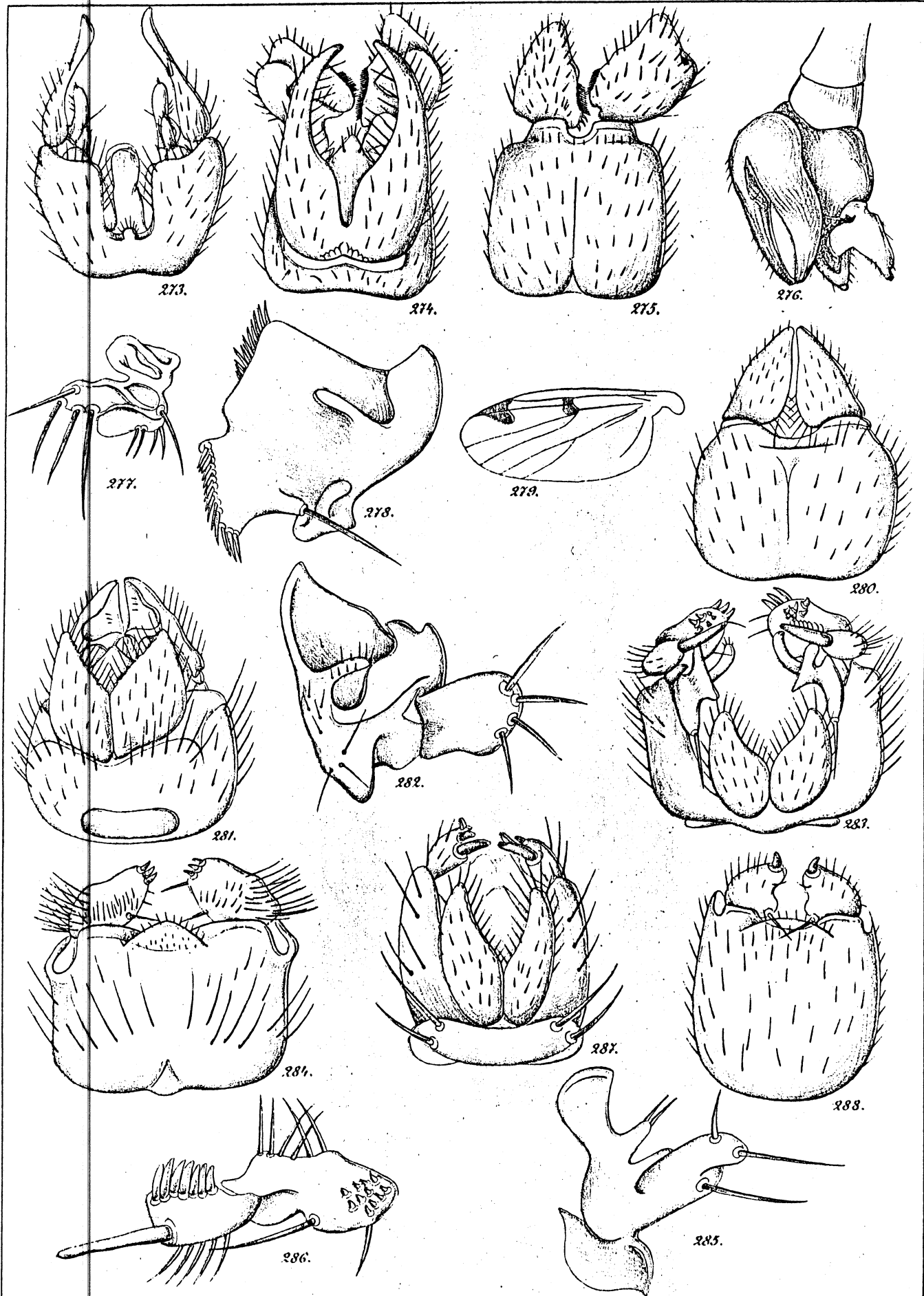


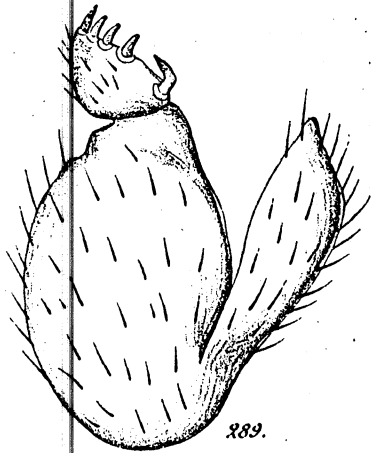




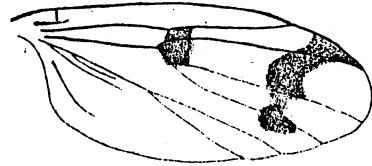




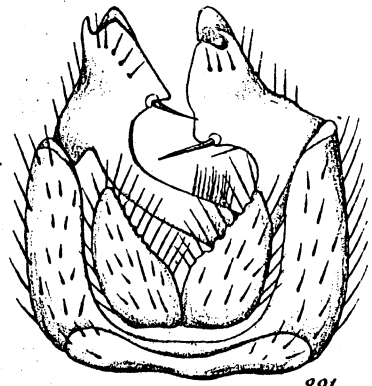




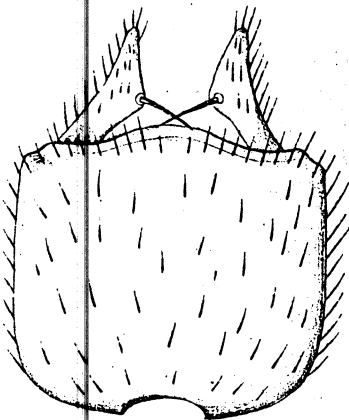
289.



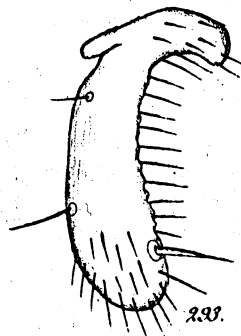
290.



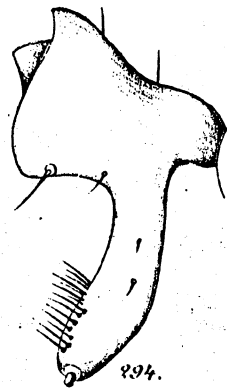
291.



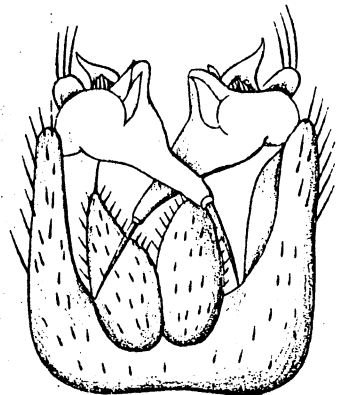
292.



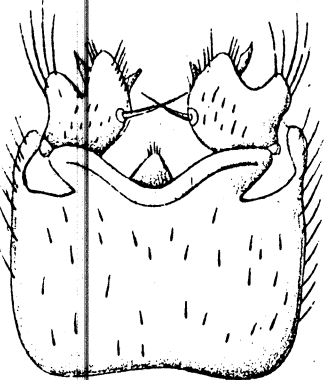
293.



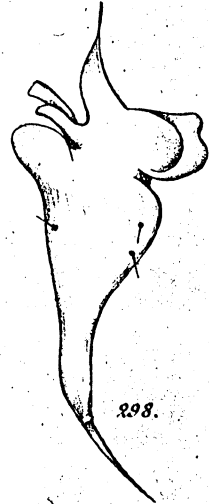
294.



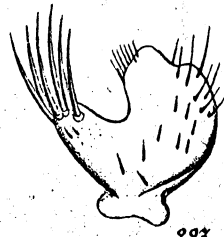
295.



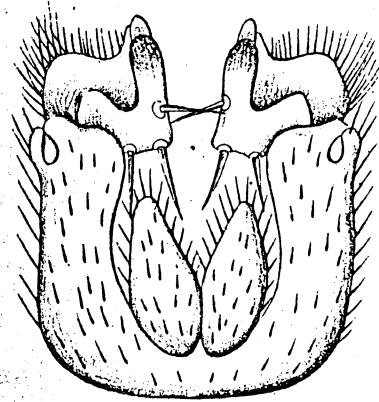
296.



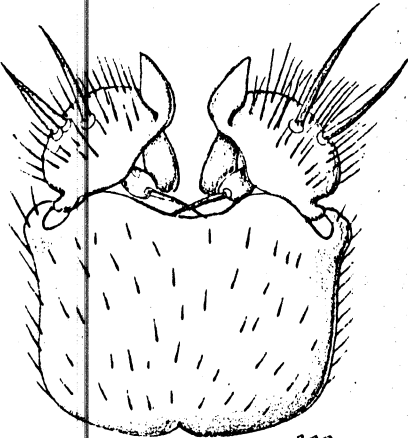
298.



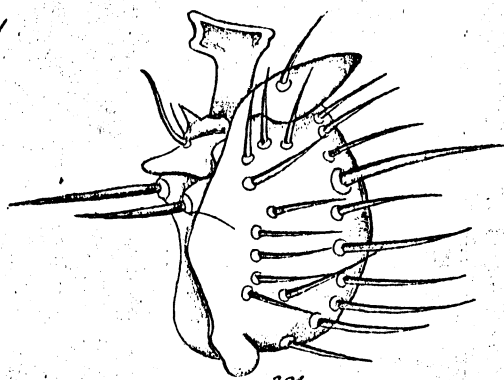
297.



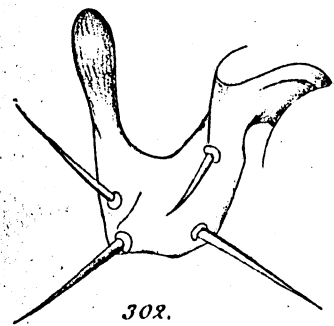
299.



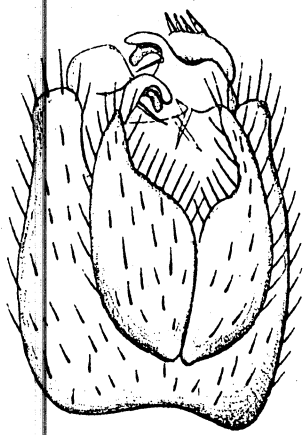
300.



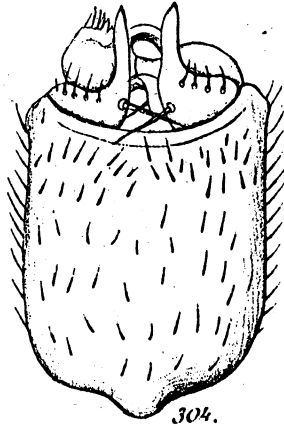
301.



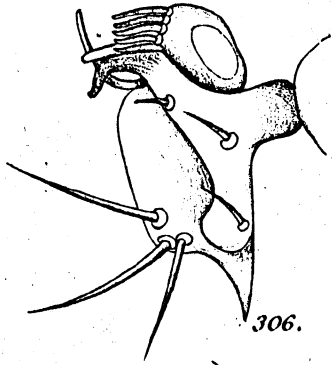
302.



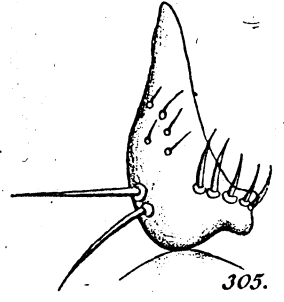
303.



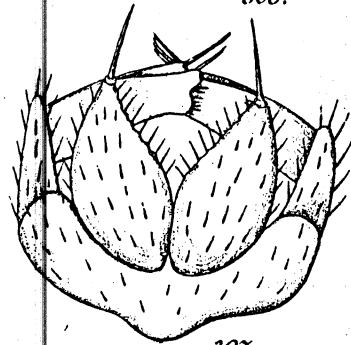
304.



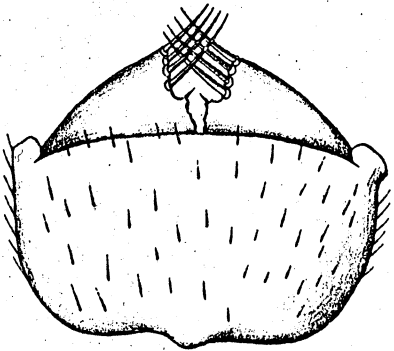
306.



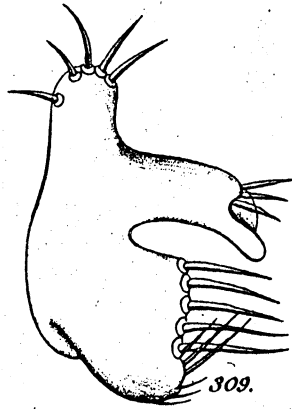
305.



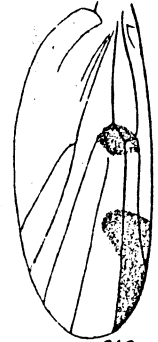
307.



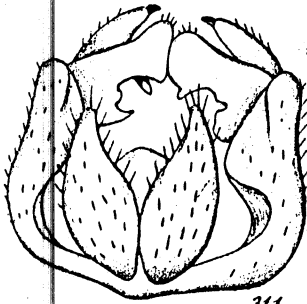
308.



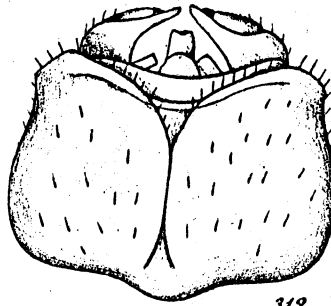
309.



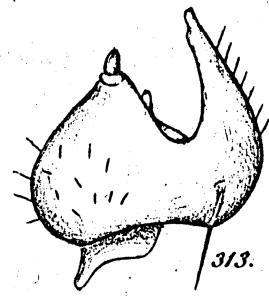
310.



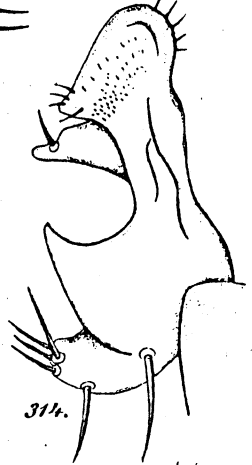
311.



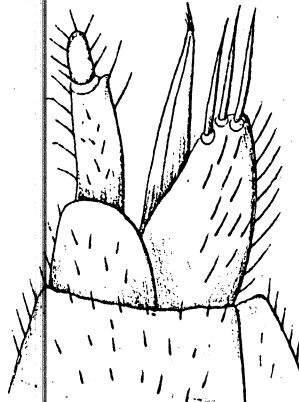
312.



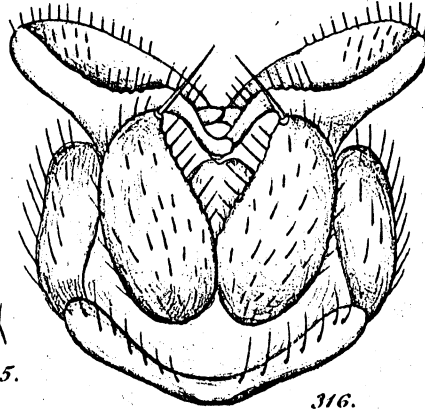
313.



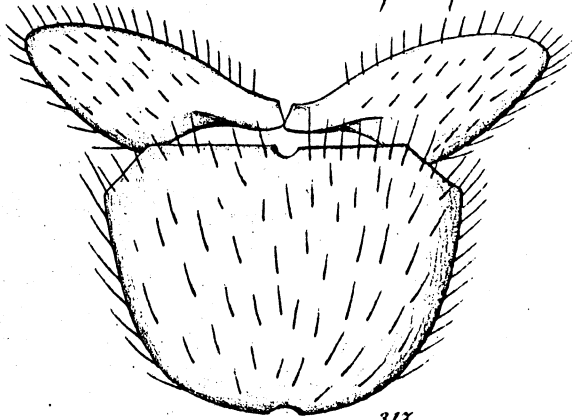
314.



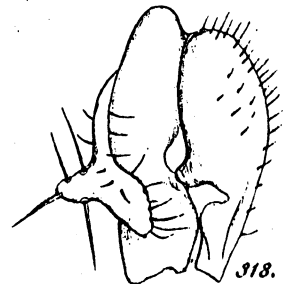
315.



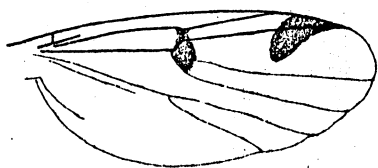
316.



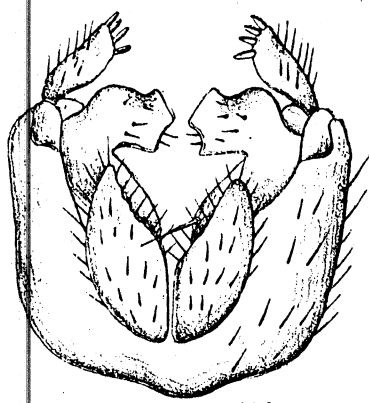
317.



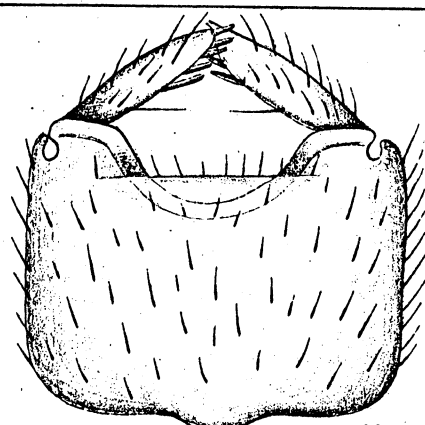
318.



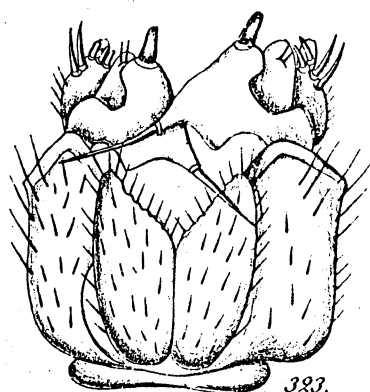
319.



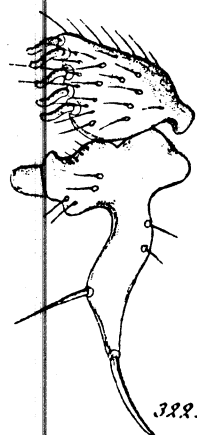
320.



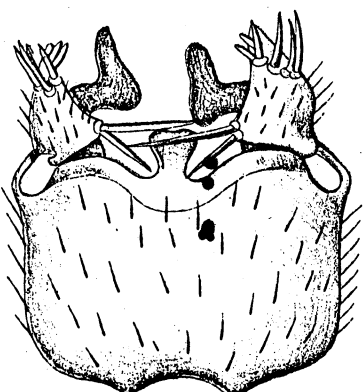
321.



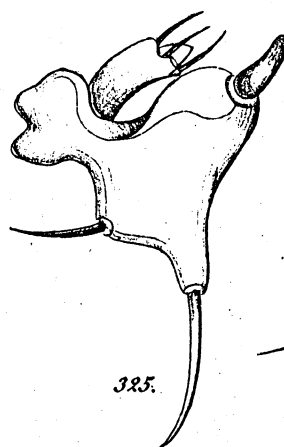
322.



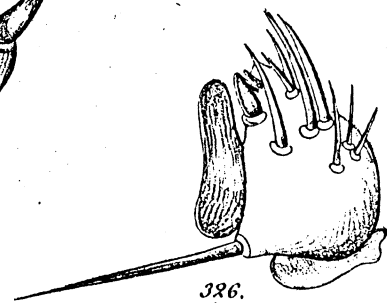
323.



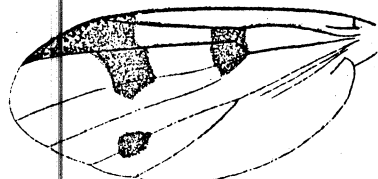
324.



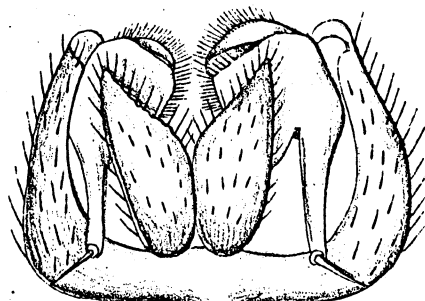
325.



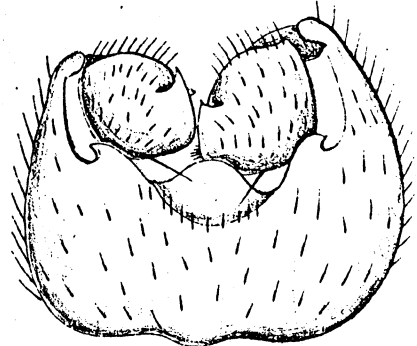
326.



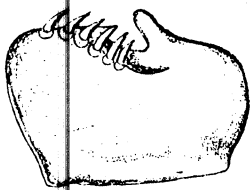
327.



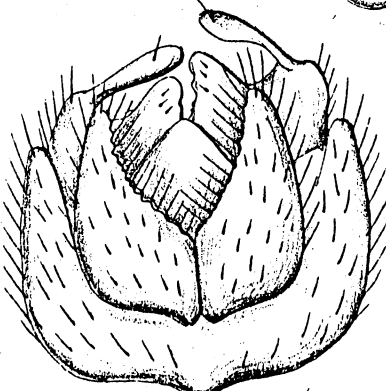
328.



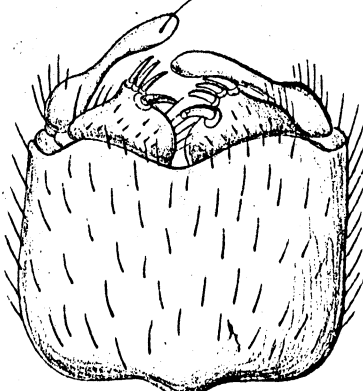
329.



330.



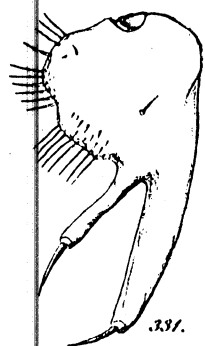
332.



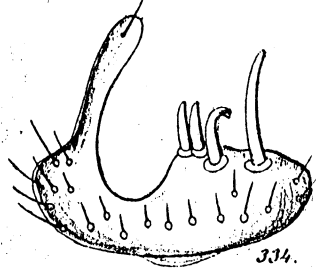
333.



335.



331.



334.